



HYDROREX



sales@hydrorex.com - eli@hydrorex.com
Office: 832 277 1182

13340 TELGE RD #401 CYPRESS TEXAS 77429 USA

0-60,000 PSI

HYDROSTATIC TEST MANIFOLDS

ALL STAINLES FOR LIQUIDS & GASES

TM9-60K (9/16" HP 1-1/8-12 UNF)

TM4-60K (1/4" HP 9/16-18 UNF)



TESTS

www.hydrorex.com - www.pressureshop.com

TM9-60K, TM4-60K

“The Professional Style” is the most common standard testing equipment.

0,60,000 PSI HIGH PRESSURE: All Stainless steel hydrostatic pressure test manifolds, multiples options are available with pressures ranges up to 60,000 psig. ideal for pressure testing with all fluids and gases. Designed for hydro pressure test on all industries including Oil & Gas.

Hydrostatic pressure test manifolds low medium and high pressure. Typical hydrostatic testing operation using an Hydrorex unit and pressure test manifolds with multiples output ports.

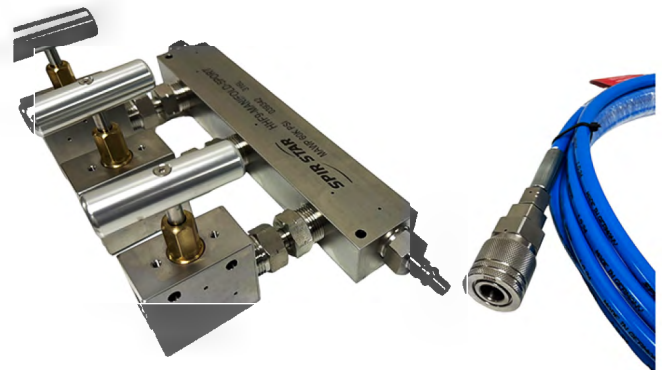
Made in USA with highest quality components for low operational cost.

SOME STANDARDS MODELS NUMBERS

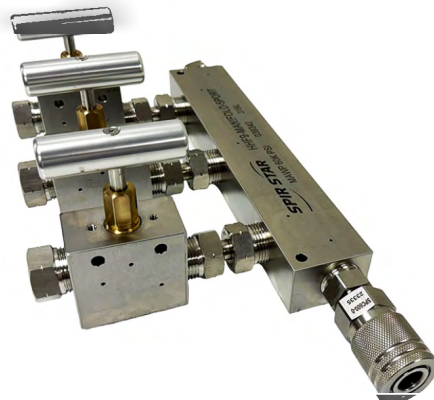
TM9-60K-3V



TM9-60K-3V-QH



TM9-60K-3V-Q



FRAME STAND



9/16" HP & 1/4" HP

All components shown below are for pressures ranging up to 60,000 psi with 9/16" female HP (1-1/8-12 UNF), 1/4" female HP (9/16-18 UNF) options. Customize your pressure test manifold to your testing requirements or select from our standard models.

Manifold Block 5 Ports Only Available.



How to Order :

TM9-60K-3V-AH
TM4-60K-3V-AH

- **TM9** – 9/16" HP Test Manifold and all components
- **TM4** – 1/4" HP Test Manifold and all components
- **60K** – Pressure 0-60,000 Psi.
- **1,2,3** – Numbers of valves needs.
- **V**- Needle Valves
- **C**- Pressure check valve
- **D** - Digital Pressure Gauge
- **G** - Pressure gauge
- **H** – Pressure Hose
- **P** – PSV pressure safety/relief valve
- **A** – Adapters JIC (hoses adapters)
- **S** – Sensor (pressure transducer digital recorder)
- **F** – Frame Stand & Support.



F - FRAME STAND

For any questions or concerns regarding your custom manifolds please contact us at eli@hydrorex.com Office: 832 277 1182



Standard Models Available or **Customize Yours**

Designed for Liquids and Gases

HYDROSTATIC TEST MANIFOLDS



0-60,000 PSI - **9/16 FHP** (1-1/8 – 12 UNF)

PART NUMBER TM9 9/16 HP	PORTS	VALVES TEST PORTS	INLET CHECK V. QUICK CONN. HOSE ADAPTER	HOSE 10ft	TEST GAUGE	PRESURE	EXTRA PORTS
TM9-60K-3V	5 PORTS	3 VALVES	X	X	X	0-60,000 PSI	1 PLUGGED
TM9-60K-3V-C	5 PORTS	3 VALVES	CHECK VALVE	X	X	0-60,000 PSI	1 PLUGGED
TM9-60K-3V-AH	5 PORTS	3 VALVES	ADAPTER HOSE	HOSE 10ft	X	0-60,000 PSI	1 PLUGGED
TM9-60K-4V-AH	5 PORTS	4 VALVES	ADAPTER HOSE	HOSE 10ft	X	0-60,000 PSI	X
TM9-60K-3V-CAH	5 PORTS	3 VALVES	CHECK VALVE ADAPTER HOSE	HOSE 10ft	X	0-60,000 PSI	1 PLUGGED

TM9-60K-3V



TM9-60K-3V-AH



Contact us to customize your own test manifold according to your test requirements at eli@hydrorex.com Office: 832 277 1182



Standard Models Available or **Customize Yours**

Designed for Liquids and Gases

HYDROSTATIC TEST MANIFOLDS



0-60,000 PSI - 1/4 FHP (9/16 - 18 UNF)

PART NUMBER TM9 1/4 HP	PORTS	VALVES TEST PORTS	INLET CHECK V. QUICK CONN. HOSE ADAPTER	HOSE 10ft	TEST GAUGE	PRESURE	EXTRA PORTS
TM4-60K-3V	5 PORTS	3 VALVES	X	X	X	0-60,000 PSI	1 PLUGGED
TM4-60K-3V-C	5 PORTS	3 VALVES	CHECK VALVE	X	X	0-60,000 PSI	1 PLUGGED
TM4-60K-3V-AH	5 PORTS	3 VALVES	ADAPTER HOSE	HOSE 10ft	X	0-60,000 PSI	1 PLUGGED
TM4-60K-4V-AH	5 PORTS	4 VALVES	ADAPTER HOSE	HOSE 10ft	X	0-60,000 PSI	X
TM4-60K-3V-CAH	5 PORTS	3 VALVES	CHECK VALVE ADAPTER HOSE	HOSE 10ft	X	0-60,000 PSI	1 PLUGGED

TM4-60K-3V



TM4-60K-3V-AH



Contact us to customize your own test manifold according to your test requirements at eli@hydrorex.com Office: 832 277 1182



ID5 - Series: EB

Hose Type 5mmUHP-X Hydrostatic Hose 0-58,000 PSI

Part# H20-58K-M9

Applications

Hydrostatic: Pressure test, booster, burst test, injection, hydro, function test, static pressure. Pressure test equipment

bolt tensioning, (valves, tooling, instrumentation, panels, controls, jacks) hydroforming.

Liquids & Gases Hydraulics, Waters, Oils, Glycol (Nitrogen, Oxigen, Helium, Hydrogen, Air, Argon)

Technical Information

Inner Core: Pressure Polyoxymethylene (POM)
8 layers of high-tensile steel wire
Support: Outer Polyamide (PA)
Cover: Color: Dark red
Temperature: -30°C to +60°C [-22°F to 140°F]



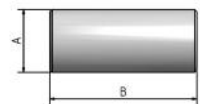
Also available in multiple connections Type HP

Ø ID	Ø OD	Working Pressure -- (SF 2.0:1)	Burst Pressure	Bend Radius	Weight	Insert ID
4,5 mm	15,3 mm	--	4.000 bar	250 mm	0,693 kg/m	2,5 mm
0,18 inch	0,60 inch	--	58.000 psi	9,84 inch	0,464 lbs/ft	0,10 inch

Part no.	Thread	Material	Dimensions (mm)				Sleeve
			A	B	C	Ø	

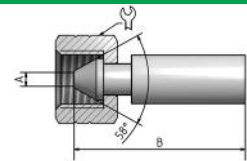
Sleeve

10580116	-	Steel	19,7	68,8	-	-	
----------	---	-------	------	------	---	---	--



Type M female swivel

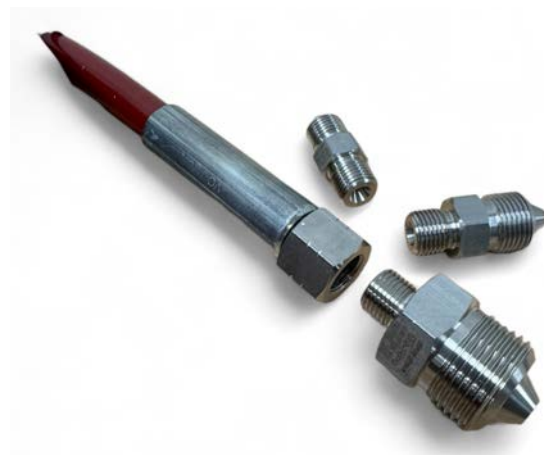
20560694EB	9/16"x18UNF	Stainless steel	50560605, 50560601	2,5	85	-	22	
------------	-------------	-----------------	--------------------	-----	----	---	----	--



Swivel nuts ends for easy connection

Order with 2 adapters

A wide selection of high pressure hoses Type M adapters varieties for working pressures up to 60000 Psi. SPIR STAR ® Type M hoses adapters for female swivel nuts hoses end connections suitable for the hydrostatic pressures.



Also available in multiple connections Type HP

Part no.	Thread	Material	Nut	Dimensions (mm)				Insert
				A	B	C	⌀	
Type HP fitting								
40560294EB	1/4"x28UNF LH	Stainless steel	-	2,5	103	14	-	
40560284EB	3/8"x24UNF LH	Stainless steel	-	2,5	112	20	-	
40560264EB	9/16"x18UNF LH	Stainless steel	-	2,5	124	24	-	
40560274EB	M14x1,5 LH	Stainless steel	-	2,5	124	24	-	
HP female swivel								
20560614EB	9/16"x18UNF	Stainless steel	50560605, 50560601	2,5	79	-	22	


Other Optional Variants

Part no.	Thread	Material	Relief bores	Dimensions (mm)				Swivel nut
				A	B	C	⌀	
Swivel nut								
50560601	9/16"x18UNF	Steel	1 radial	9,2	18	14	22	
50560605	9/16"x18UNF	AISI 316	1 radial	9,2	18	14	22	

Part no.	Thread	Material	Relief bores	Dimensions (mm)				Tube cleaning accessories
				A	B	C	⌀	
Marking ring								
1.851720.5	-	AISI 316	-	18,3	10	-	-	

Part no.	Material	Crimp ring	Dimensions (mm)		Bend restrictor
			⌀	Length	
PU bend restrictor					
1.9518306C	PU	1003035	34	250	

Part no.	Size (mm)	Material	Crimp ring	Hose protection
1.902228	ID Ø22, OD Ø28	PVC	1002830	
1.902531	ID Ø25, OD Ø31	PVC	-	
Hose protection with spiral				
1.912229	ID Ø22, OD Ø35	PVC	1003035	
1.912532	ID Ø25, OD Ø32	PVC	-	

Part no.	Mesh length (mm)	Overall length (mm)	Breaking strength (kN)	Suitable for SPIR STAR® hose outer diameter (mm)	Hose securing grip
Hose securing grip short version					
9086400	600,00	780,00	20,40	15-20	
Hose securing grip long version					
908640L	600,00	990,00	20,40	15-20	