



HYDROREX



sales@hydrorex.com - eli@hydrorex.com
Office: 832 277 1182

13340 TELGE RD #401 CYPRESS TEXAS 77429 USA

0-30,000 PSI

HYDROSTATIC TEST MANIFOLDS

ALL STAINLES FOR LIQUIDS & GASES

TM9-30K (9/16" HP 1-1/8-12 UNF)

TM4-30K (1/4" HP 9/16-18 UNF)



**T
E
S
T
S**

www.hydrorex.com - www.pressureshop.com

TM9-30K, TM4-30K

“The Professional Style” is the most common standard testing equipment.

0,30,000 PSI HIGH PRESSURE: All Stainless steel hydrostatic pressure test manifolds, multiples options are available with pressures ranges up to 30,000 psig. ideal for pressure testing with all fluids and gases. Designed for hydro pressure test on all industries including Oil & Gas.

Hydrostatic pressure test manifolds low medium and high pressure. Typical hydrostatic testing operation using an Hydrorex unit and pressure test manifolds with multiples output ports.

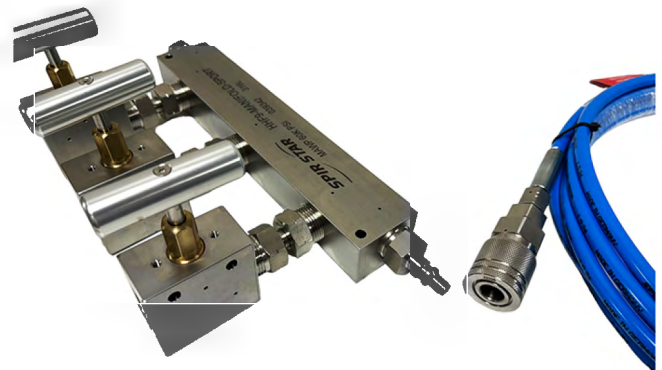
Made in USA with highest quality components for low operational cost.

SOME STANDARDS MODELS NUMBERS

TM9-30K-3V



TM9-30K-3V-QH



TM9-30K-3V-Q



FRAME STAND



9/16" HP & 1/4" HP

All components shown below are for pressures ranging up to 30,000 psi with 9/16" female HP (1-1/8-12 UNF), 1/4" female HP (9/16-18 UNF) options. Customize your pressure test manifold to your testing requirements or select from our standard models.

Manifold Block 5 Ports Only Available.



How to Order :

TM9-30K-3V-CQH
TM4-30K-3V-CQH

- **TM9** – 9/16" HP Test Manifold and all components
- **TM4** – 1/4" HP Test Manifold and all components
- **30K** – Pressure 0-30,000 Psi.
- **1,2,3** – Numbers of valves needs.
- **V**- Needle Valves
- **C**- Pressure check valve
- **Q** – Quick Connector / Disconnecter
- **G**- Pressure gauge
- **H** – Pressure Hose
- **P** – PSV pressure safety/relief valve
- **A** – Adapters JIC (hoses adapters)
- **S** – Sensor (pressure transducer digital recorder)
- **F** – Frame Stand & Support.

For any questions or concerns regarding your custom manifolds please contact us at

eli@hydrorex.com Office: 832 277 1182



Standard Models Available or **Customize Yours**

Designed for Liquids and Gases

HYDROSTATIC TEST MANIFOLDS



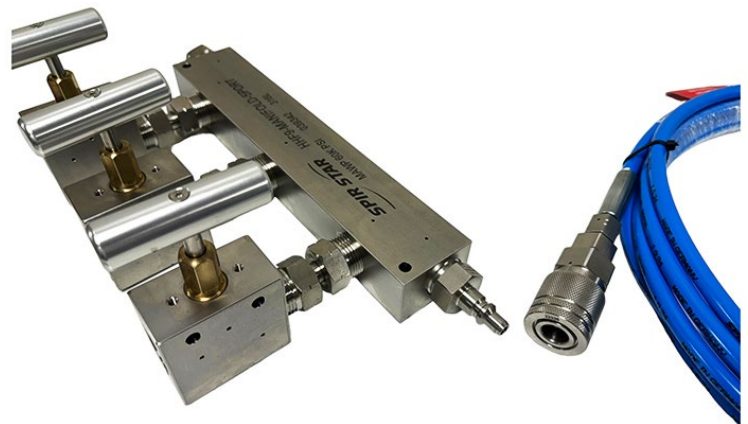
0-30,000 PSI - **9/16 FHP** (1-1/8 – 12 UNF)

PART NUMBER TM9 9/16 HP	PORTS	VALVES TEST PORTS	INLET CHECK V. QUICK CONN. HOSE ADAPTER	HOSE 10ft	TEST GAUGE	PRESURE	EXTRA PORTS
TM9-30K-3V	5 PORTS	3 VALVES	OPEN	X	X	0-30,000 PSI	1 PLUGGED
TM9-30K-3V-C	5 PORTS	3 VALVES	CHECK VALVE	X	X	0-30,000 PSI	1 PLUGGED
TM9-30K-3V-QH	5 PORTS	3 VALVES	QUICK CONNECT	HOSE 10ft	30K GAUGE	0-30,000 PSI	1 PLUGGED
TM9-30K-4V-CH	5 PORTS	4 VALVES	CHECK VALVE	HOSE 10ft	30K GAUGE	0-30,000 PSI	X
TM9-30K-3V-AH	5 PORTS	3 VALVES	ADAPTER HOSE	HOSE 10ft	X	0-30,000 PSI	X

TM9-30K-3V



TM9-30K-3V-QH



Contact us to customize your own test manifold according to your test requirements at eli@hydrorex.com Office: 832 277 1182



Standard Models Available or **Customize Yours**

Designed for Liquids and Gases

HYDROSTATIC TEST MANIFOLDS



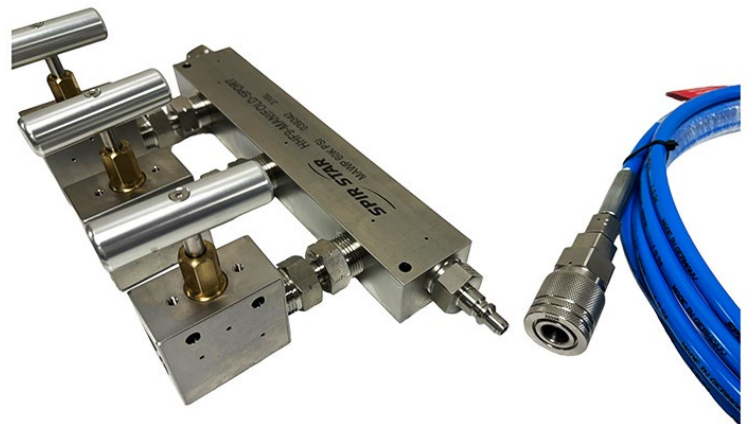
0-30,000 PSI - **1/4 FHP** (9/16 - 18 UNF)

PART NUMBER TM4 1/4 HP	PORTS	VALVES TEST PORTS	INLET CHECK V. QUICK CONN. HOSE ADAPTER	HOSE 10ft	TEST GAUGE	PRESURE	EXTRA PORTS
TM4-30K-3V	5 PORTS	3 VALVES	OPEN	X	X	0-30,000 PSI	1 PLUGGED
TM4-30K-3V-C	5 PORTS	3 VALVES	CHECK VALVE	X	X	0-30,000 PSI	1 PLUGGED
TM4-30K-3V-QH	5 PORTS	3 VALVES	QUICK CONNECT	HOSE 10ft	30K GAUGE	0-30,000 PSI	1 PLUGGED
TM4-30K-4V-CH	5 PORTS	4 VALVES	CHECK VALVE	HOSE 10ft	30K GAUGE	0-30,000 PSI	X
TM4-30K-3V-AH	5 PORTS	3 VALVES	ADAPTER HOSE	HOSE 10ft	X	0-30,000 PSI	X

TM4-30K-3V



TM4-30K-3V-QH



Contact us to customize your own test manifold according to your test requirements at eli@hydrorex.com Office: 832 277 1182



ID5 - Series: E

Hose Type 5/6 Hydrostatic Hose 0-36,000 Psi **Part# H10-36K-M9**

Applications

Hydrostat:

Pressure test, booster, burst test, injection, hydro, function test, static pressure. Pressure test equipment Bolt tensioning, (valves, tooling, instrumentation, panels, controls, jacks) hydroforming, subsea, hydraulics and more.



Liquid & Gases

Hydraulics, Waters, Oils, Glycol (Nitrogen, Oxygen, Helium, Hydrogen, Air, Argon)

Technical Information

Inner Core:

Polyoxymethylene (POM)

Pressure Support:

6 layers of high-tensile steel wire

Outer Cover:

Polyamide (PA)

Color:

Blue

Temperature:

-30°C to +70°C [-22°F to 158°F]



Ø ID	Ø OD	Working Pressure		Burst Pressure	Bend Radius	Weight	Insert ID
		--	(SF 2,5:1)				
4,8 mm	13,2 mm	--	2.500 bar	6.250 bar	200 mm	0,450 kg/m	2,5 mm
0,19 inch	0,52 inch	--	36.250 psi	90.625 psi	7,87 inch	0,302 lbs/ft	0,10 inch

Part no.	Thread	Material	Dimensions (mm)				Sleeve
			A	B	C	⌀	
10560136	-	Steel	17,8	68	-	-	
10560135	-	AISI 316Ti	17,8	68	-	-	

Part no.	Thread	Material	Nut	Dimensions (mm)				Insert
				A	B	C	⌀	
20560694E	9/16"x18UNF	Stainless steel	50560605, 50560601	2,5	85	-	22	
Type M female swivel								

Hose Adapters 0-60,000 Psi

Order with 2 adapters

A wide selection of high pressure hoses Type M adapters varieties for working pressures up to 60000 Psi. SPIR STAR® Type M hoses adapters for female swivel nuts hoses end connections suitable for the hydrostatic pressures.

www.hydrorex.com



Hose Quick Disconnects 0-30,000 Psi - Series SPC600

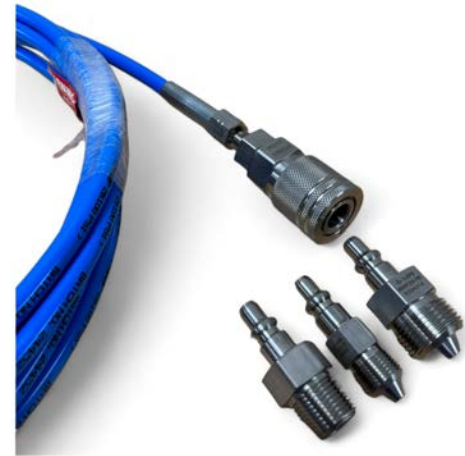
Hose Type 5/6

Order with 2 quick disconnect set

Coupler & Nipple

A wide selection of high pressure hoses quick disconnects (all stainless steel) coupler and nipple varieties suitable for working pressures of up to 2.070 bar (30.000 psi). SPIR STAR® offers the right solutions for all pressures applications hoses quick connects.

www.hydrorex.com



Also available in multiple connections Type HP

Part no.	Thread	Material	Nut	Dimensions (mm)				Insert
				A	B	C	⌀	
HP female swivel								
20560614E	9/16"x18UNF	Stainless steel	50560605, 50560601	2,5	79	-	22	
Swivel nut								
Part no.	Thread	Material	Relief bores	Dimensions (mm)				Swivel nut
				A	B	C	⌀	
Swivel nut								
50560601	9/16"x18UNF	Steel	1 radial	9,2	18	14	22	
50560605	9/16"x18UNF	AISI 316Ti	1 radial	9,2	18	14	22	
50560301	G1/4"	Steel	1 radial	9,2	19	11	22	
50540101	M14x1,5	Steel	1 radial	9,2	16,5	8,5	19	
HP fitting								
40560294E	1/4"x28UNF LH	Stainless steel	-	2,5	103	14	-	
40560284E	3/8"x24UNF LH	Stainless steel	-	2,5	112	20	-	
40560264E	9/16"x18UNF LH	Stainless steel	-	2,5	124	24	-	
40560274E	M14x1,5 LH	Stainless steel	-	2,5	124	24	-	
Female swivel 24°/60°								
20560314E	G1/4"	Stainless steel	50560301	2,5	84	-	22	
20560164E	M14x1,5	Stainless steel	50540101	2,5	84	-	19	