



ECONOMIC, DURABLE, SAFE & EASY TO OPERATE

- 13340 Telge Rd. #401 Cypress TX 77429
- eli@hydrorex.com
- Office: 832.277.1182



## TECHNICAL DATA SHEET

PRODUCT	<b>HAND &amp; AIR OPERATE SYSTEM</b>
MODEL	<b>CSS-7000REX</b>
SERIES	<b>SERIES CSS-REX</b>
API	<b>CERTIFIED ACCORDING TO API SPECIFICATIONS</b>



The CSS series pump is self priming for immediate operation. Hand pump attachment allows for manual operation when shop air is not available or for **Precision Pressure Control**. Air operated liquid system that is lightweight portable, safe, durable and easy to operate. Made in USA with highest quality components. Available for use on a wide range of fluids including water, oil/hydraulic, distilled, di-ionized water, liquefied CO2 and many other solubles; requires 20-100 psi when air drive pressure to operate. **Designed for Hydrostatic, Calibration, Pressure Certification, Burst, Booster, Hydro, Injection, Leak Detector, and More.**

### FEATURES/BENEFITS

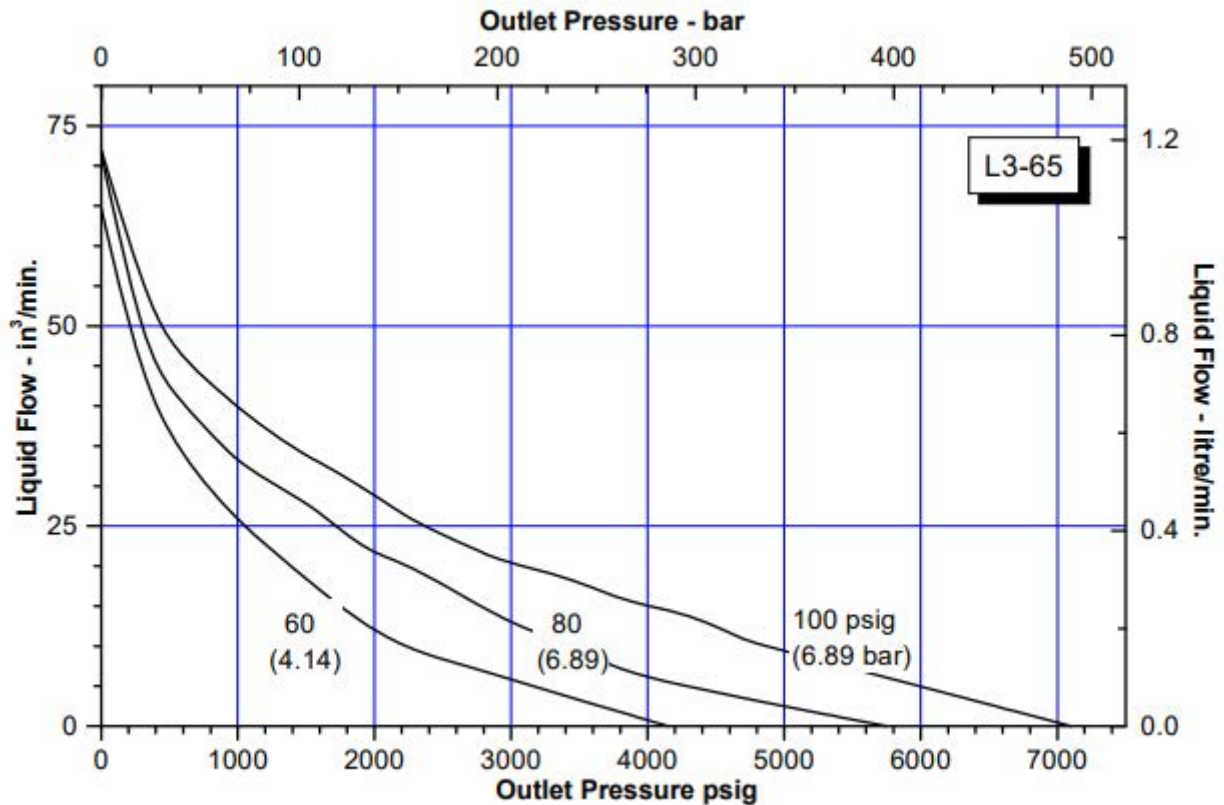
- Designed for easy maintenance
- Low cost servicing
- Hand and Air operated liquid pump
- **Stainless Reservoir Tank 8 Liters.**
- All pressure valves, tubing, fittings & hardware are stainless 316
- Pressure Chart Recorder Port (Optional)
- Unit weight: 50 pounds - Dimensions: 23" x 18" x 11"
- HS Code: 8413.50.0050
- Certificated according to API specifications

### PERFORMANCE DATA

Output Flow	0.27 GPM (1 LPM)
Max Output Pressure	7000 psi (483 bar)
Operation - Driven	Hand
Air Supply - Driven	20-100 Psi
Air Inlet Port	1/4" female NPT
Outlet Pressure Port	1/4" female NPT
Pump Brand & Ration	SC-Hydraulic Ratio 65:1

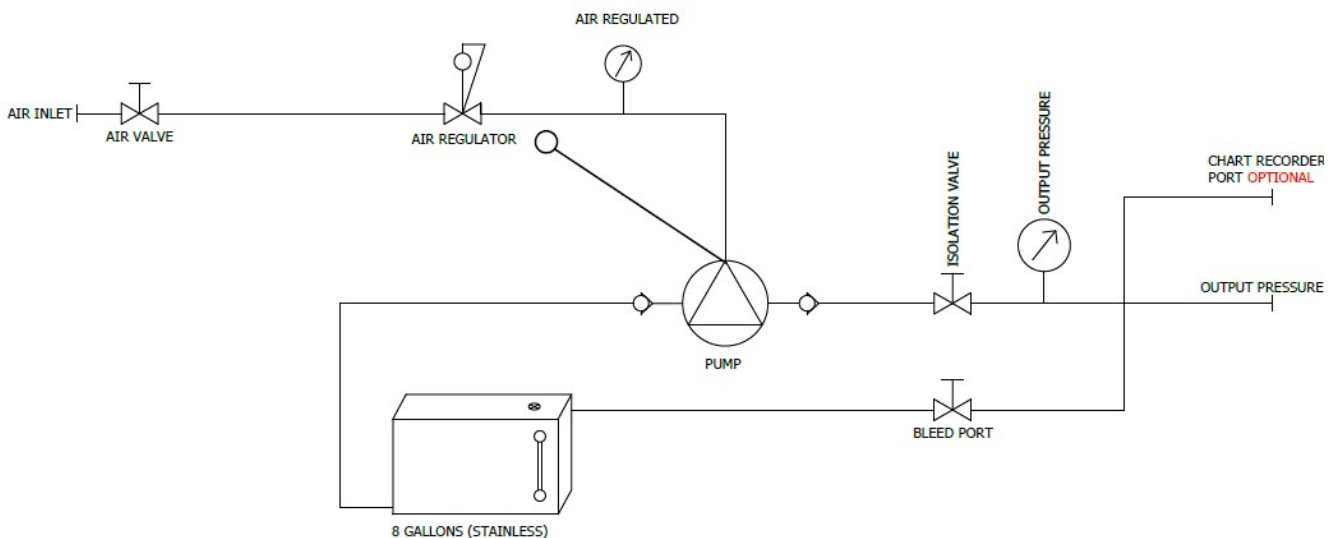


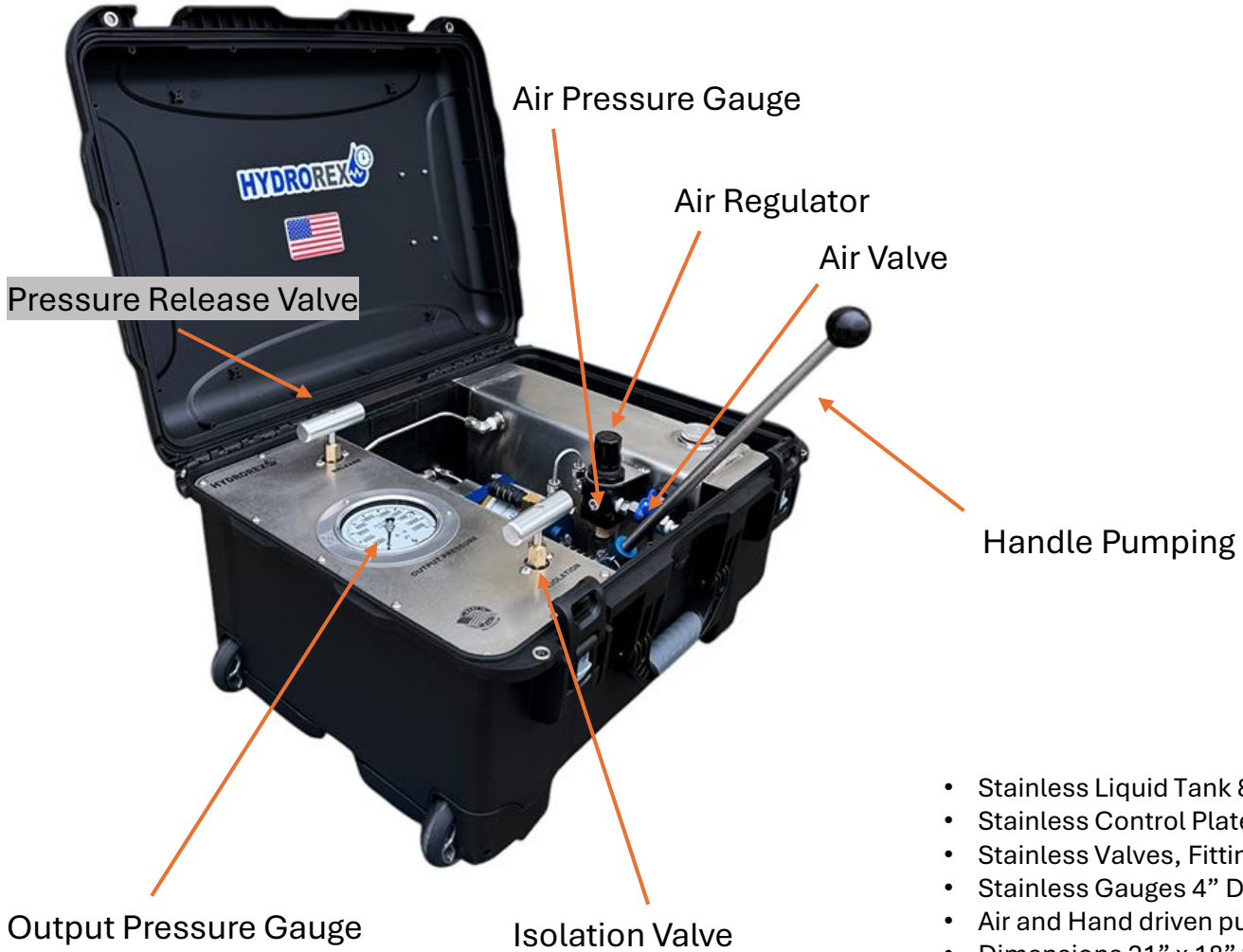
## FLOW CURVE RATIO 65:1



### GENERAL PRODUCT INFORMATION

- When operating from 0 to rated hydraulic pressure, air consumption will be approximately 5-12 scfm of free air at 100 psi output. At lower air pressures and higher hydraulic pressures air consumption will be reduced proportionately to flow rates indicated.
- The CSS-REX Series "Dry Lube" pump does not require an air line lubricator.
- Contact Hydrorex for pressure gauges calibration / certificate.
- Maintenance parts for future repairs, all components & accessories can be found on our website [www.hydrorex.com](http://www.hydrorex.com).





- Stainless Liquid Tank 8 Liters
- Stainless Control Plate
- Stainless Valves, Fittings & Tubing
- Stainless Gauges 4" Dial
- Air and Hand driven pump
- Dimensions 21" x 18" x 9"
- Weight: 45 lbs
- Case: Storm Rugged Weatherproof

