

TECHNICAL DATA SHEET

PRODUCT	HAND & AIR OPERATE SYSTEM
MODEL	CSS-10000REX
SERIES	SERIE CSS-REX
API	CERTIFIED ACCORDING TO API SPECIFICATIONS



The CSS series pump is self priming for immediate operation. Hand pump attachment allows for manual operation when shop air is not available or for **Precision Pressure Control**. Air operated liquid system that is lightweight portable, safe, durable and easy to operate. Made in USA with highest quality components. Available for use on a wide range of fluids including water, oil/hydraulic, distilled, di-ionized water, liquefied CO2 and many other solubles; requires 20-100 psi when air drive pressure to operate. **Designed for Hydrostatic, Calibration, Pressure Certification, Burst, Booster, Hydro, Injection, Leak Detector, and More.**

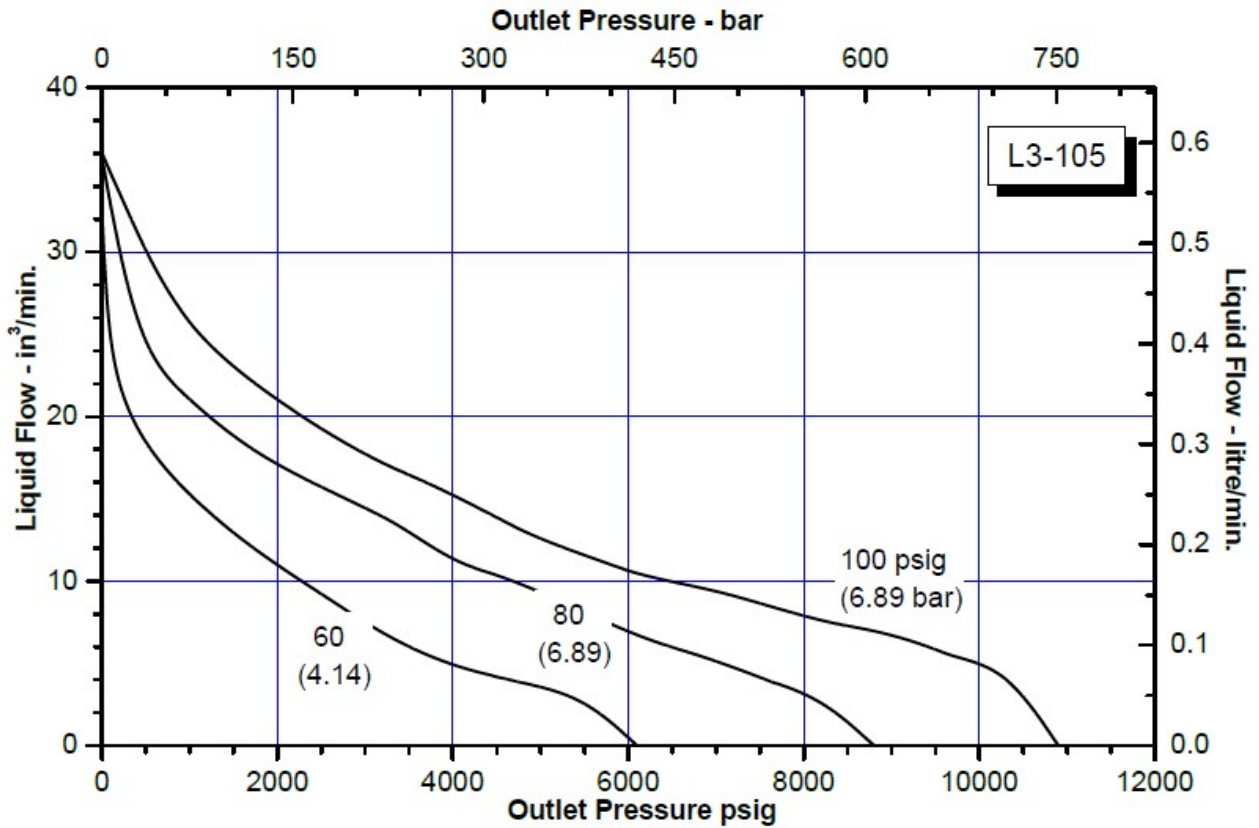
FEATURES/BENEFITS

- Designed for easy maintenance
- Low cost servicing
- Hand and Air operated liquid pump
- **Stainless Reservoir Tank 8 Liters.**
- All pressure valves, tubing, fittings & hardware are stainless 316
- Pressure Chart Recorder Port (Optional)
- Unit weight: 50 pounds - Dimensions: 23" x 18" x 11"
- HS Code: 8413.50.0050
- Certificated according to API specifications

PERFORMANCE DATA

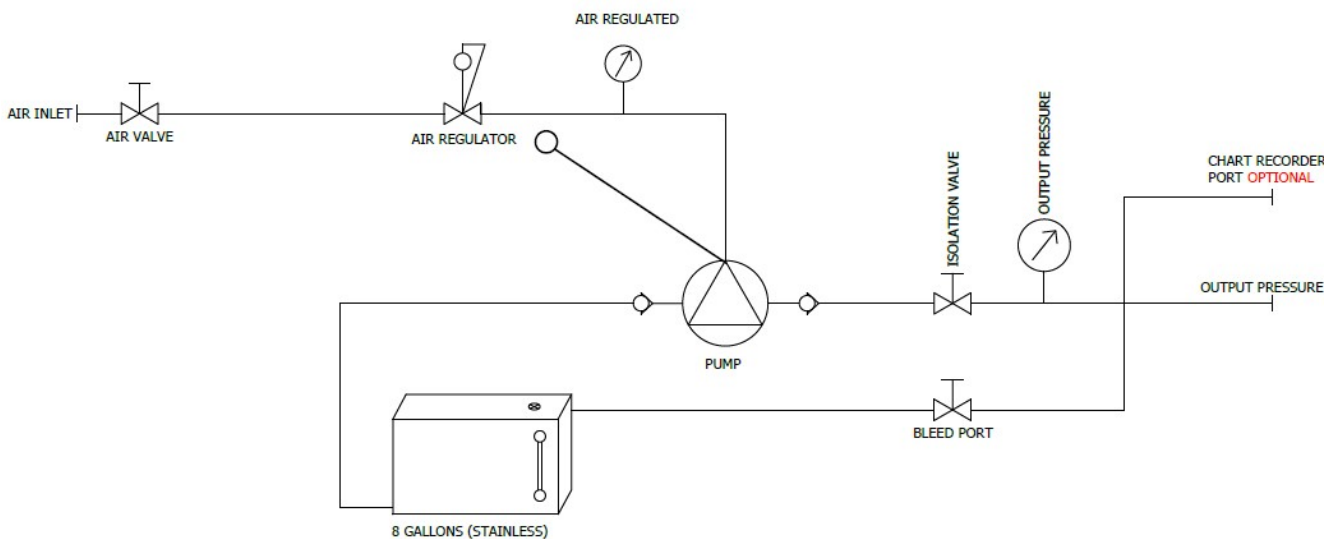
Output Flow	0.24 GPM (0.50 LPM)
Max Output Pressure	10000 psi (759 bar)
Operation - Driven	Air & Hand
Air Supply - Driven	20-100 Psi
Air Inlet Port	1/4" female NPT
Outlet Pressure Port	1/4" female NPT
Pump Brand & Ration	SC-Hydraulic Ratio 105:1

FLOW CURVE RATIO 105:1



GENERAL PRODUCT INFORMATION

- When operating from 0 to rated hydraulic pressure, air consumption will be approximately 5-12 scfm of free air at 100 psi output. At lower air pressures and higher hydraulic pressures air consumption will be reduced proportionately to flow rates indicated.
- The CSS-REX Series "Dry Lube" pump does not require an air line lubricator.
- Contact Hydrorex for pressure gauges calibration / certificate.
- Maintenance parts for future repairs, all components & accessories can be found on our website www.hydrorex.com.





- Stainless Liquid Tank 8 Liters
- Stainless Control Plate
- Stainless Valves, Fittings & Tubing
- Stainless Gauges 4" Dial
- Air and Hand driven pump
- Dimensions 21" x 18" x 9"
- Weight: 45 lbs
- Case: Storm Rugged Weatherproof

