

ELECTRICAL HYDROSTATIC TEST PUMPS

Designed for hydrostatic pressure test, hoses, sprinkler systems, pressure vessels, piping, pipe lines, instrumentation control systems, industrial and residential plumbing and more with wide ranges of fluids:

❖ WATER ❖ HYDRAULIC ❖ GLYCOL ❖ OILS

Hydrorex M12 Series: Offering several flow rates and pressures up to **1800 Psi**.

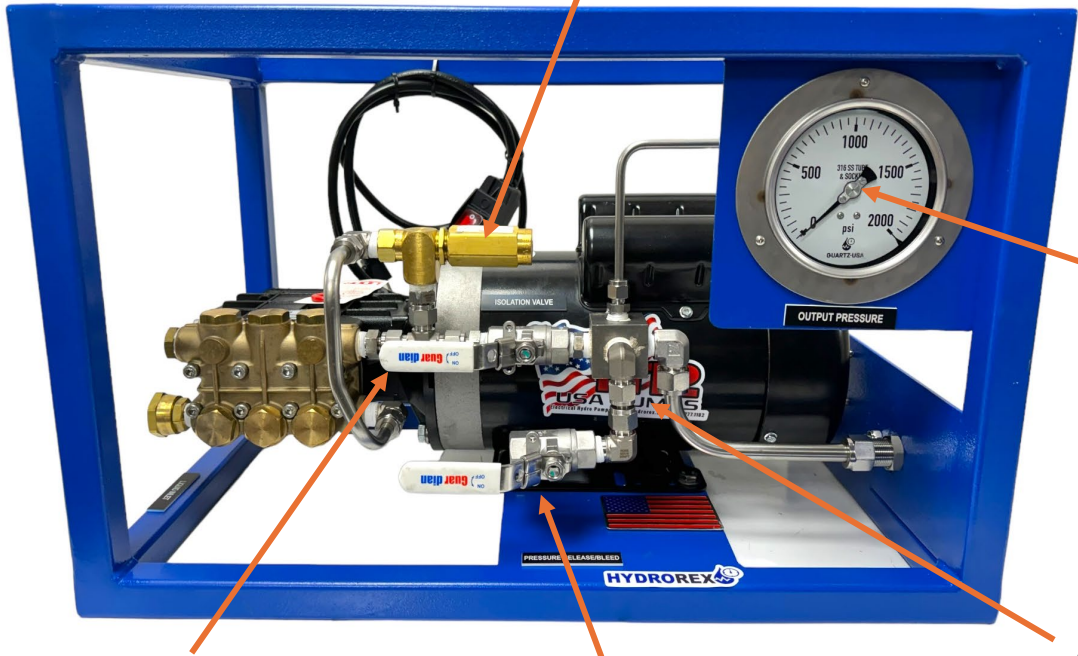
- Pump: Triplex Plunger
- Power: 110V & 240V
Motor 50/60HZ 110/240V
- Made in USA
- Adjustable pressure regulator
- Heavy duty frame to protect from damage
- Affordable and easy to operate



MODEL	PRESSURE	GPM	LPM	INLET PORT	OULET PORT	MOTOR	POWER	WEIGHT
M12-300	300 PSI	4	15	3/4"	1/2" FNPT	1HP	110V/220V	85 LBS
M12-500	500 PSI	4	15	3/4"	1/2" FNPT	1HP	110V/220V	85 LBS
M12-1000	1000 PSI	2	8	3/4"	1/2" FNPT	1.5HP	110V/220V	85 LBS
M12-1500	1500 PSI	2	8	3/4"	1/2" FNPT	1.5HP	110V/220V	85 LBS
M12-2000	1800 PSI	4	15	3/4"	1/2" FNPT	5HP	220V	105 LBS

- Flow 6 Gallons per minute as long as it is connected to any water source
- Flow 3 Gallons per minute when connected to liquid tank.

ADJUSTABLE
PRESSURE REGULATOR



4" PRESSURE GAUGE

ISOLATION VALVE

PRESSURE BLEED VALVE

ALL STAINLESS
TUBE, VALVES & FITTINGS



OUTPUT PRESSURE
1/2" FEMALE NPT

110V POWER
ON/OFF SWITCH



TRIPLEX PLUMGER PUMP

1/2" FNPT HEAD PUMP PORT
WITH 3/4 GARDEN STANDARD HOSE ADAPTER

OPERATING INSTRUCTIONS

CONNECTING THE UNIT

1- The motor switch must be in the off position, connect the electrical cord into the 110V outlet plug, recommended an electrical extension of no more than 40 feet in length.

2- **WATER:** Connect clean pressurized water source to pump inlet. It is recommended that the unit be pressure fed.

HYDRAULIC & OTHERS FLUIDS: For gravity feed, locate the elevated water above the level of the unit, then prime the pump.

3. Connect the high pressure hose to the output 1/2" female NPT port.

OPERATING THE UNIT

1- Turn the outlet valve (isolation valve) to the open position and close the pressure release valve and start the motor.

2- The pressure should start to rise slowly depending on the volume of liquid or size of the test. Once test pressure has been reached, close the outlet pressure isolation valve ball and shut-off motor.

3- Once the outlet ball valve is closed and your test begins, you have now isolated the test pump from the test environment, any loss of pressure is due to leaks in the test environment.

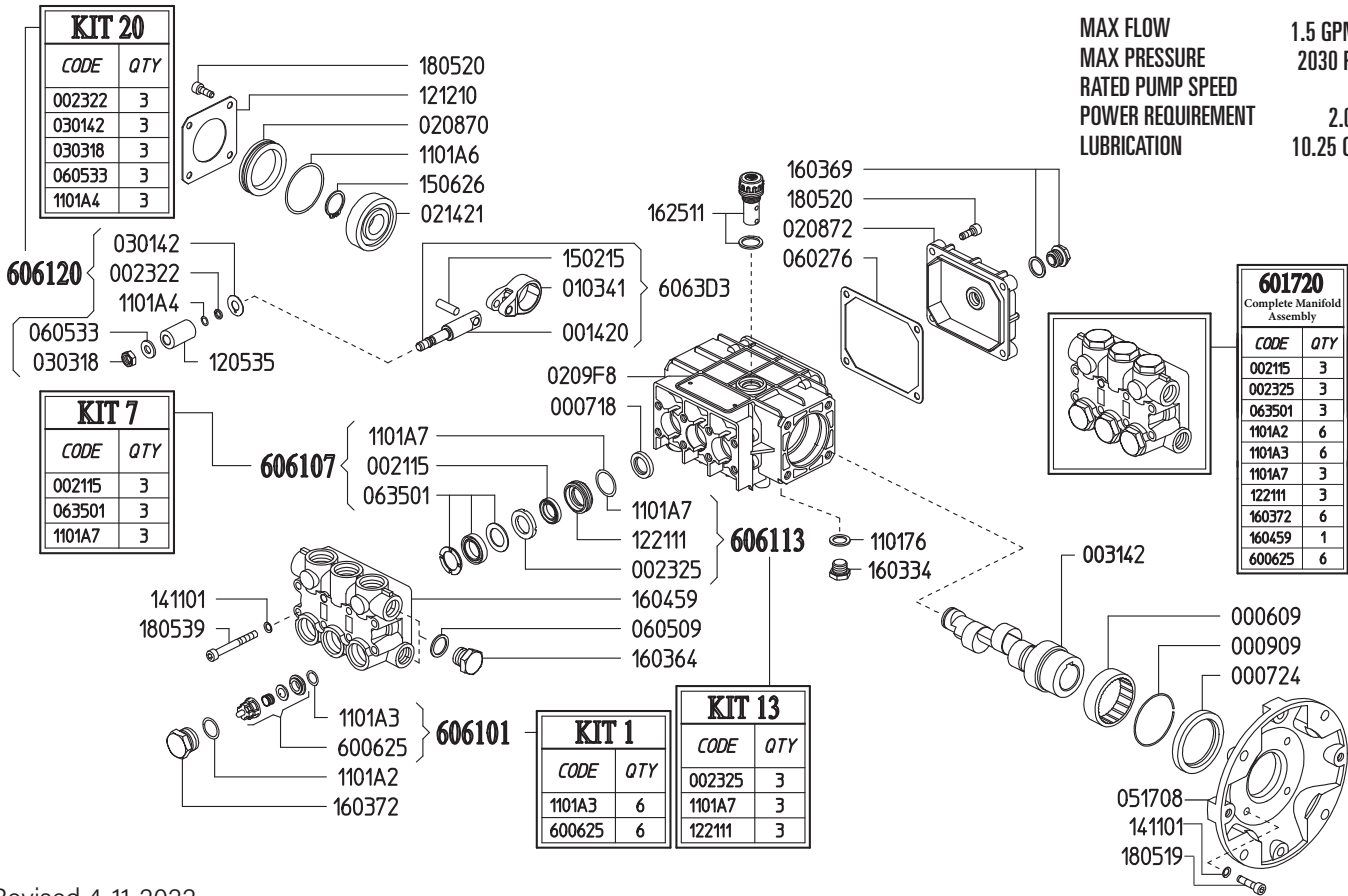
PRESSURE REGULATOR

The pressure regulator it is regulated by the factory but in case you want to change the pressure you must make this adjustment while the water is flowing freely and the system is under no pressure.

To adjust the pressure, first loosen the locknut. Turn the T-handle/Knob clockwise to increase and counter-clockwise to decrease the pressure. Place a ballvalve or similar open and close valve at the end of the outlet hose, open and close this valve multiple times as needed, to check pressure setting and re-adjust as necessary. It is also recommended that you open and close the hosebib located under the gauge to bleed excess air from piping and ensure accurate pressure gauge readings. Upon reaching desired pressure setting, tighten locknut and prepare to begin test.



MAX FLOW 1.5 GPM / 5.7 L/MIN
MAX PRESSURE 2030 PSI / 140 BAR
RATED PUMP SPEED 1750 RPM
POWER REQUIREMENT 2.0 HP ELECTRIC
LUBRICATION 10.25 OZ UDOR LUBE



Revised 4-11-2022

Part #	Description	Qty	Part #	Description	Qty
0006.09	BUSHING D45X52X16 HK45-16	1	1101.A7	O-RING - LP SEAL RETAINER ^{B C E}	3
0007.18	OIL SEAL D15X24X4	3	1205.35	CERAMIC PLUNGER D15X30 "PN"	3
0007.24	OIL SEAL D40X52X7	1	1212.10	METAL COVER "PN"	1
0009.09	ELASTIC RING D52X2.5	1	1221.11	LOW PRESS. SEAL RETAINER D15 ^{C E}	3
0014.20	PLUNGER GUIDE D15/18 "PN"	3	1411.01	SERATED WASHER D6	12
0021.15	WATER SEAL LP. D15 ^{B E}	3	1502.15	PIN D7X25.5	3
0023.22	RING D6.3X9X1.3 2021 "PN/C/G" ^{C E}	3	1506.26	SNAP RING D20	1
0023.25	INTERMEDIATE RING D15 "PN"	3	1603.34	PLUG G1/4	1
0031.42	HOLLOW SHAFT "PN" D5/8"	1	1603.64	PLUG G3/8	1
0103.41	CONNECTING ROD "PN/PS"	3	1603.69	OIL PLUG G1/4+GASKET	1
0208.70	COVER "PN"	1	1603.72	VALVE PLUG "PN" PISTON D15/18 ^A	3
0208.72	BACK COVER "PN"	1	1604.59	HEAD "PN" PISTON D15/18	1
0209.F8	CRANKCASE "PN/PS"	1	1625.11	OIL PLUG G3/8 "PN"	1
0214.21	BALL BEARING D20X52X15	1	1805.19	ALLEN BOLT M6X25	4
0301.42	SLINGER RING "PN/PK/PKWT/PS" ^D	3	1805.20	ALLEN BOLT M6X16	8
0303.18	NUT "PN/PK/PKWT/PS M8XH5 ^D	3	1805.39	ALLEN BOLT M6X60	8
0517.08	ENGINE FLANGE "PN" NEMA 56H	1	6006.25	VALVE ASSY "PN" W/O O-RING ^{A E}	6
0602.76	BACK COVER GASKET "PN/PK/PW/PS"	1	6017.20	COMPLETE MANIFOLD ASSEMBLY	1
0605.09	GASKET D17X23X1.5 (G3/8)	1	6061.01	KIT 1 - VALVE KIT "PN/PW"	1
0605.33	GASKET D8X14X2 ^D	3	6061.07	KIT 7 - WATER SEAL KIT D15 "PN/PK"	1
0635.01	HIGH PRESS. SEAL ASSY D15 ^{B E}	3	6061.13	KIT 13 - BRASS RING KIT D15 "PN"	1
1101.76	O-RING - OIL PLUG	1	6061.20	Kit 20 - PLUNGER KIT D15/18 "PN"	1
1101.A2	O-RING - VALVE CAP ^E	6			
1101.A3	O-RING - VALVE ^{A E}	6			
1101.A4	O-RING - PLUNGER ^D	3			
1101.A6	O-RING - BEARING COVER	1			

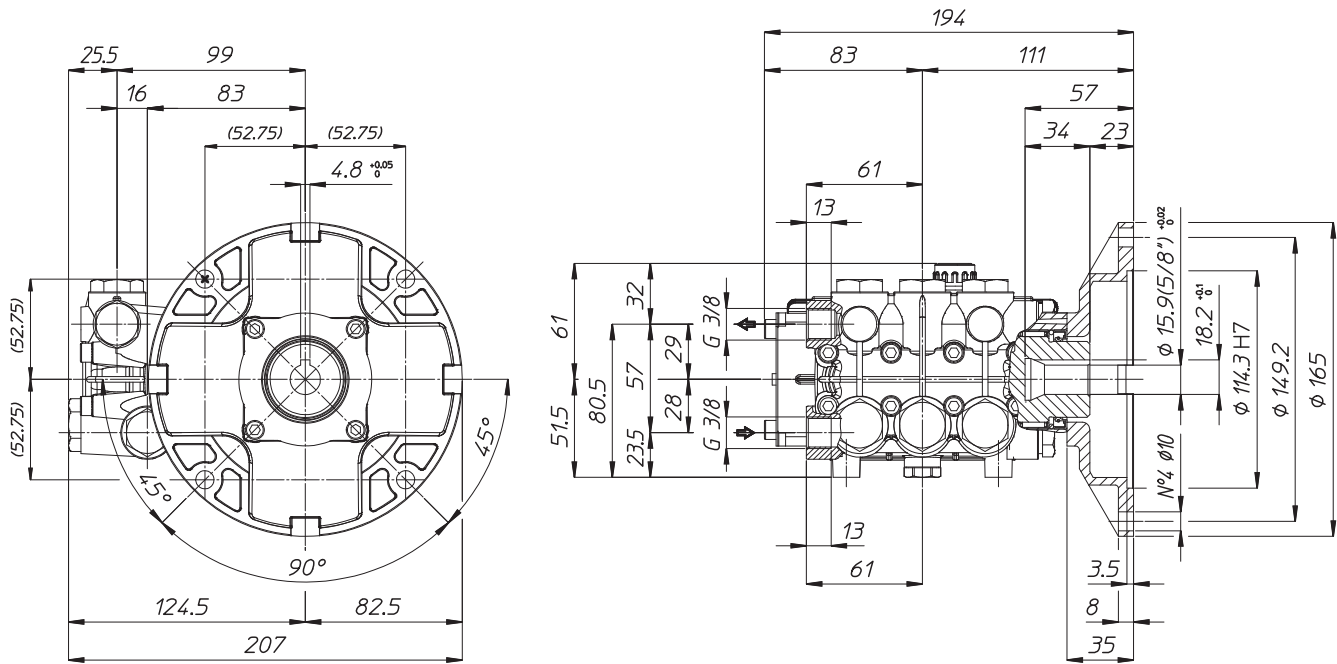
^A Parts in 6061.01 (Kit 1).
^B Parts in 6061.07 (Kit 7).
^C Parts in 6061.13 (Kit 13).
^D Parts in 6061.20 (Kit 20).
^E Parts in 6017.20 (Complete Manifold Assembly).

WEIGHT
LUBRICATION

13 LBS
10 OZ UDOR LUBE

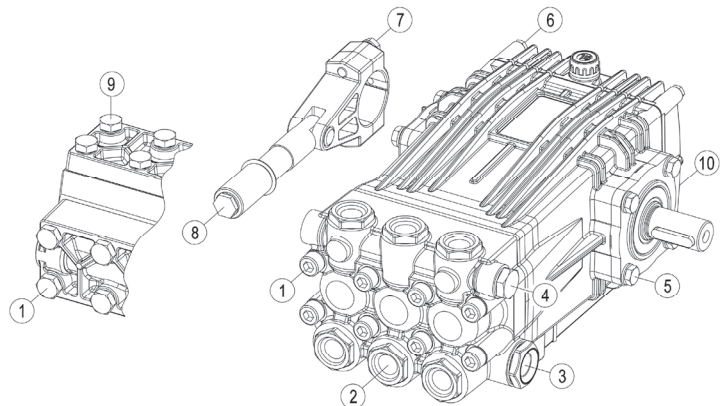
*Dimensional Drawings are
Shown in Millimeters.
To Convert to Inches,
Multiply Dimension x 0.03937*

PN SERIES PUMPS - 5/8" HOLLOW SHAFT w/ NEMA 56C FLANGE

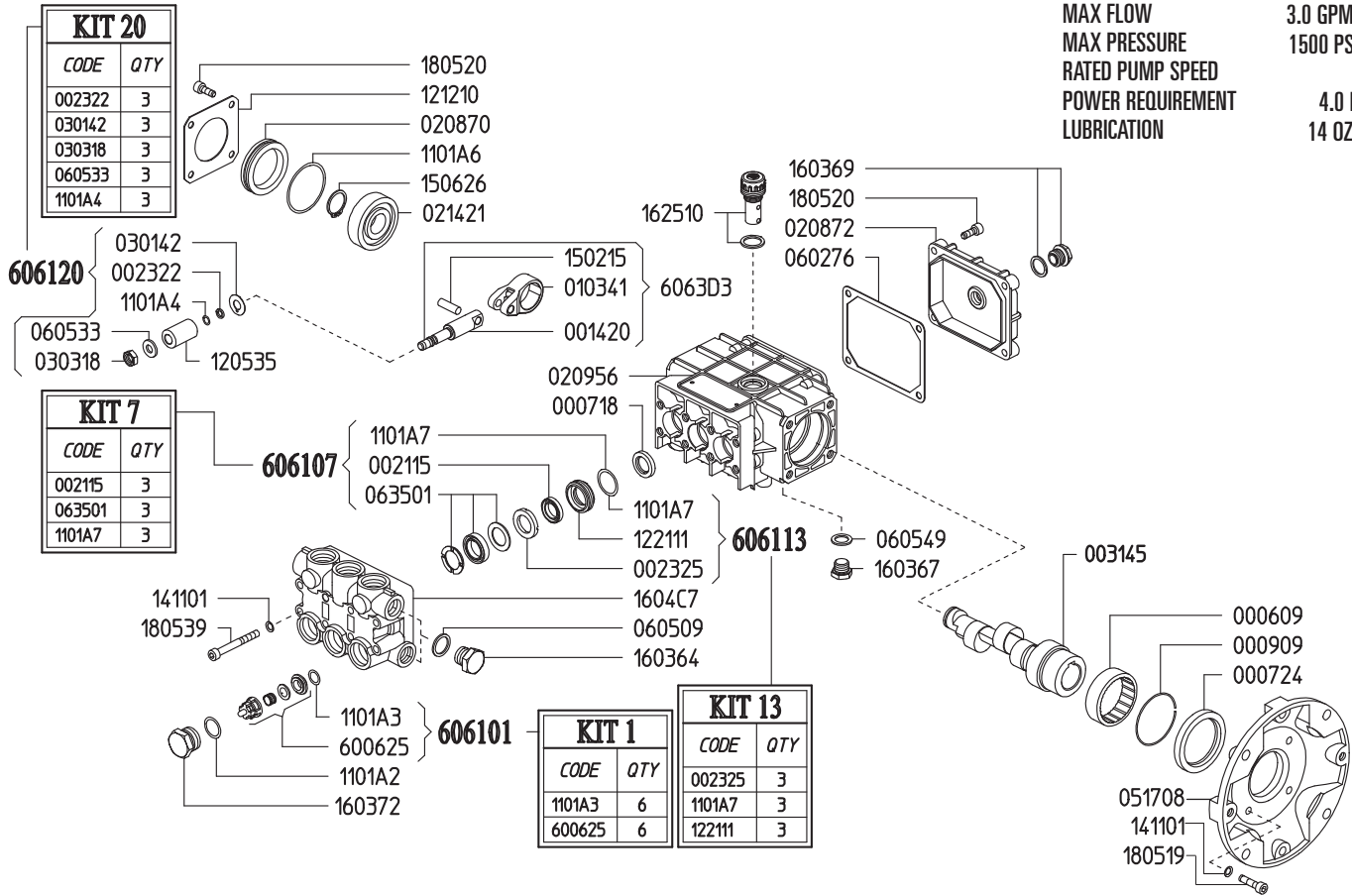


TORQUE SPECS

Ref.	Description	Ft./lb.	Nm	Loctite®
1	Head Bolts	8	11	-
2	Valve Caps	75	100	243
3	Inlet Cap	60	80	-
4	Outlet Cap	60	80	243
5	Bearing Flange Bolts	8	11	-
6	Rear Cover Bolts	8	11	-
7	Connecting Rod Bolts	-	-	-
8	Plunger Bolts	11	15	270
9	Valve Cover Bolts	-	-	-
10	Oil Drain Plug	6	8	-



MAX FLOW 3.0 GPM / 11 L/MIN
MAX PRESSURE 1500 PSI / 100 BAR
RATED PUMP SPEED 1750 RPM
POWER REQUIREMENT 4.0 HP ELECTRIC
LUBRICATION 14 OZ UDOR LUBE



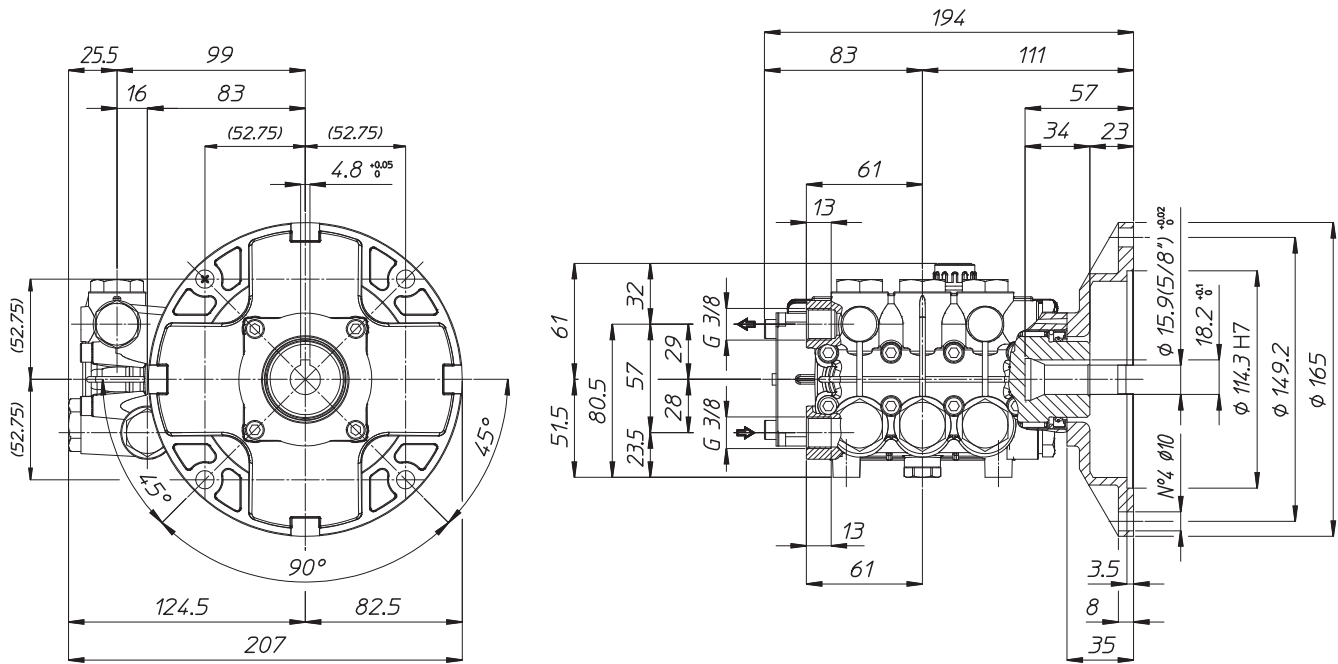
Part #	Description	Qty
0006.09	BUSHING D45X52X16 HK45-16	1
0007.18	OIL SEAL D15X24X4	3
0007.24	OIL SEAL D40X52X7	1
0009.09	ELASTIC RING D52X2.5	1
0014.20	PLUNGER GUIDE D15/18 "PN"	3
0021.15	WATER SEAL LP. D15 ^B	3
0023.22	RING D6.3X9X1.3 2021 "PN/C/G" ^C	3
0023.25	INTERMEDIATE RING D15 "PN"	3
0031.45	HOLLOW SHAFT "PN" D5/8" ECC=5.25	1
0103.41	CONNECTING ROD "PN/PS"	3
0208.70	COVER "PN"	1
0208.72	BACK COVER "PN"	1
0209.56	CRANKCASE "PN/PS"	1
0214.21	BALL BEARING D20X52X15	1
0301.42	SLINGER RING "PN/PK/PKWT/PS" ^D	3
0303.18	NUT "PN/PK/PKWT/PS M8XH5 ^D	3
0517.08	ENGINE FLANGE "PN" NEMA 56H	1
0602.76	BACK COVER GASKET "PN/PK/PW/PS"	1
0605.09	GASKET D17X23X1.5 (G3/8)	1
0605.33	GASKET D8X14X2 ^D	3
0605.49	GASKET D13X19X1.5	1
0635.01	HIGH PRESS. SEAL ASSY D15 ^B	3
1101.A2	O-RING - VALVE CAP	6
1101.A3	O-RING - VALVE ^A	6
1101.A4	O-RING - PLUNGER ^D	3

Part #	Description	Qty
1101.A6	O-RING - BEARING COVER	1
1101.A7	O-RING - LP SEAL RETAINER ^{B,C}	3
1205.35	CERAMIC PLUNGER D15X30 "PN"	3
1212.10	METAL COVER "PN"	1
1221.11	LOW PRESS. SEAL RETAINER D15 ^C	3
1411.01	SERATED WASHER D6	12
1502.15	PIN D7X25.5	3
1506.26	SNAP RING D20	1
1603.64	PLUG G3/8	1
1603.67	PLUG G1/4	1
1603.69	OIL PLUG G1/4+GASKET	1
1603.72	VALVE PLUG "PN" PISTON D15/18 ^A	6
1604.C7	HEAD "PN" PISTON D15/18 ALUMINUM	1
1625.10	OIL PLUG G3/8 "PN"	1
1805.19	ALLEN BOLT M6X25	4
1805.20	ALLEN BOLT M6X16	8
1805.39	ALLEN BOLT M6X60	8
6006.25	VALVE ASSY "PN" W/O O-RING ^A	6
6061.01	KIT 1 - VALVE KIT "PN/PW"	1
6061.07	KIT 7 - WATER SEAL KIT D15 "PN/PK"	1
6061.13	KIT 13 - BRASS RING KIT D15 "PN"	1
6061.20	Kit 20 - PLUNGER KIT D15/18 "PN"	1

^A Parts in 6061.01 (Kit 1).
^B Parts in 6061.07 (Kit 7).
^C Parts in 6061.13 (Kit 13).
^D Parts in 6061.20 (Kit 20).

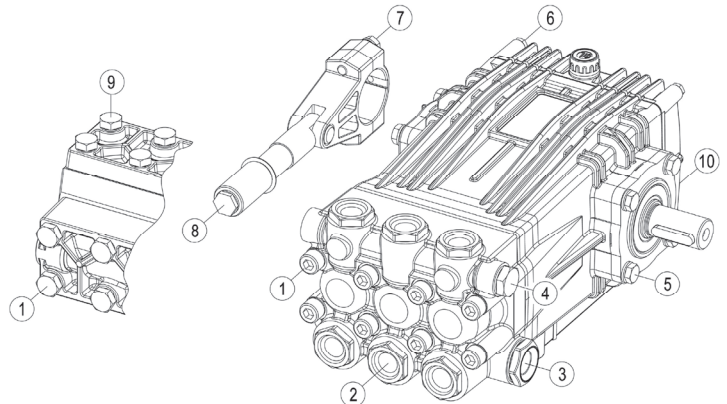
*Dimensional Drawings are
Shown in Millimeters.
To Convert to Inches,
Multiply Dimension x 0.03937*

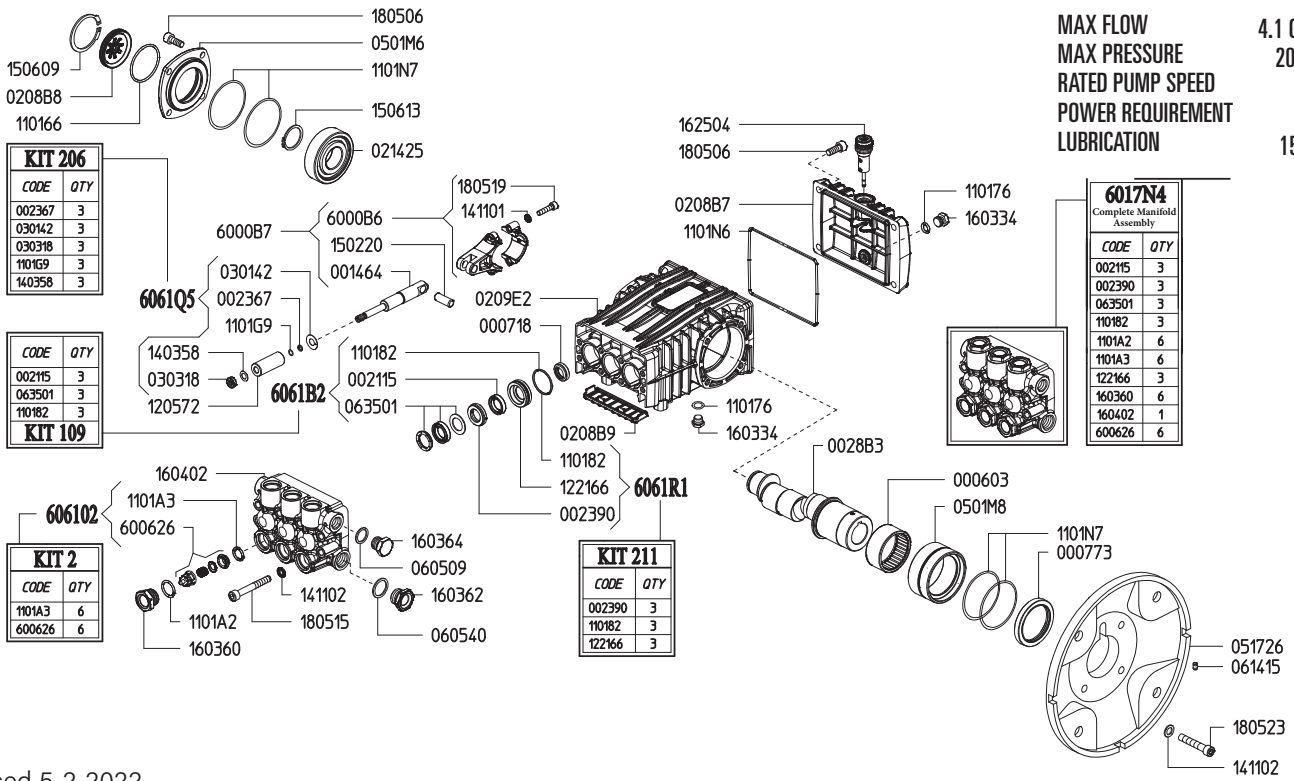
PN SERIES PUMPS - 5/8" HOLLOW SHAFT w/ NEMA 56C FLANGE



TORQUE SPECS

Ref.	Description	Ft./lb.	Nm	Loctite®
1	Head Bolts	8	11	-
2	Valve Caps	75	100	243
3	Inlet Cap	60	80	-
4	Outlet Cap	60	80	243
5	Bearing Flange Bolts	8	11	-
6	Rear Cover Bolts	8	11	-
7	Connecting Rod Bolts	-	-	-
8	Plunger Bolts	11	15	270
9	Valve Cover Bolts	-	-	-
10	Oil Drain Plug	6	8	-





MAX FLOW 4.1 GPM / 15.5 L/MIN
MAX PRESSURE 2030 PSI / 140 BAR
RATED PUMP SPEED 1750 RPM
POWER REQUIREMENT 6.0 HP ELECTRIC
LUBRICATION 15.4 OZ UDOR LUBE

Revised 5-2-2022

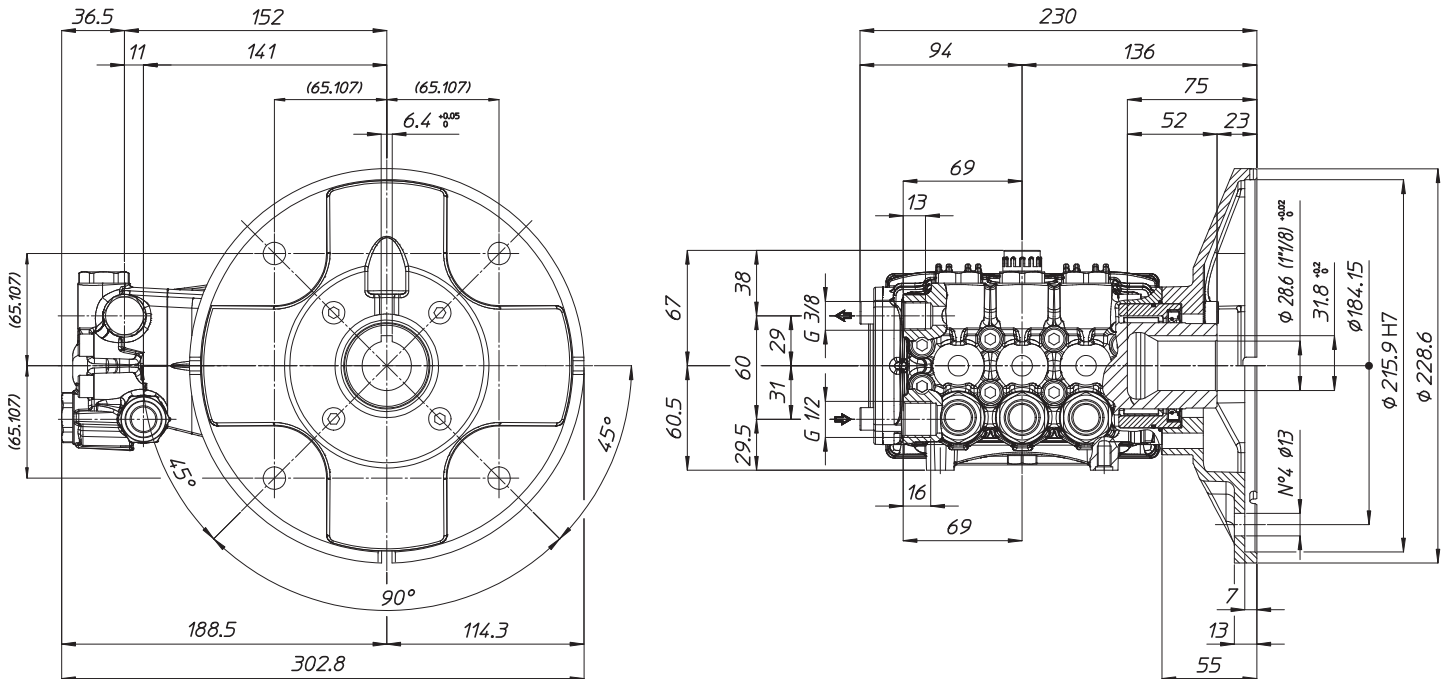
Part #	Description	Qty	Part #	Description	Qty
0006.03	BUSHING D50	1	1205.72	CERAAMIC PLUNGER D15 "B/BK"	3
0007.18	OIL SEAL D15X24X5	3	1221.66	PRESSURE RING D15 "B/BK" ^{D E}	3
0007.73	OIL SEAL D50	1	1403.58	WASHER D8 ^C	3
0014.64	PLUNGER GUIDE "B/BK"	3	1411.01	SERATED WASHER D6	6
0021.15	WATER SEAL LP D15X22X5.7 ^{B E}	3	1411.02	SERATED WASHER D8	12
0023.67	RING D5.2X8X1.3 ^C	3	1502.20	PIN D10X27	3
0023.90	UPPER RING D15 "B/BK" ^{D E}	3	1506.09	SNAP RING D52	1
0028.B3	HOLLOW SHAFT "B/BK" D1-1/8"	1	1506.13	SNAP RING D30	1
0208.B7	BACK COVER "B/BK"	1	1603.34	PLUG G1/4	2
0208.B8	OIL SIGHT GLASS	1	1603.60	VALVE PLUG D15/18/20 ^E	+
0208.B9	COVER "B/BK"	1	1603.62	PLUG G1/2	1
0209.E2	CRANKCASE "B-X/BK-X"	1	1603.64	PLUG G3/8	1
0214.25	BEARING D30	1	1604.02	HEAD "BX" ^E	1
0301.42	SLINGER RING ^C	3	1625.04	OIL PLUG G3/8	1
0303.18	NUT M8XH5 ^C	3	1805.03	ALLEN BOLT M8X30	4
0501.M6	BEARING FLANGE "B/BK"	1	1805.06	ALLEN BOLT M8X20	8
0501.M8	BEARING FLANGE "B/BK"	1	1805.15	ALLEN BOLT M8X60	8
0517.27	ENGINE FLANGE "B/BK" HP7/18	1	1805.19	ALLEN BOLT M6X25	6
0605.09	GASKET D17X23X1.5	1	1805.23	ALLEN BOLT M8X40	4
0605.40	GASKET D21.5X27X1.5	1	6000.B6	ROD ASSEMBLY "B/BK"	3
0614.15	SET SCREW M5X8	1	6006.26	VALVE ASSEMBLY WITHOUT O-RING ^{A E}	6
0635.01	HIGH PRESSURE SEAL KIT D15 ^{B E}	3	6017.N4	COMPLETE MANIFOLD ASSEMBLY	1
1101.66	O-RING - OIL SIGHT GLASS	1	6061.02	KIT 2 - VALVE KIT "PK/M/B"	1
1101.76	O-RING - PLUG	2	6061.B2	KIT 109 - WATER SEAL KIT	1
1101.82	O-RING - PRESSURE RING ^{B D E}	3	6061.Q5	KIT 206 - PLUNGER KIT D15/18 "B/BK"	1
1101.A2	O-RING - VALVE PLUG ^E	6	6061.R1	KIT 211 - BRASS RING KIT D15 "B/BK"	1
1101.A3	O-RING - VALVE ^{A E}	6			
1101.G9	O-RING - PLUNGER ROD ^C	3			
1101.N6	O-RING - BACK COVER	1			
1101.N7	O-RING - BEARING FLANGE	4			

^A Parts in 6061.02 (Kit 2).
^B Parts in 6061.B2 (Kit 109).
^C Parts in 6061.Q5 (Kit 206).
^D Parts in 6061.R1 (Kit 211).
^E Parts in 6017.N4 (Complete Manifold Assembly).

M12-2000H / M12-1000H / M12-500H / M12-300H

*Dimensional Drawings are
Shown in Millimeters.
To Convert to Inches,
Multiply Dimension x 0.03937*

B SERIES PUMPS - 1-1/8" HOLLOW SHAFT w/ 182/184 FLANGE



TORQUE SPECS

Ref.	Description	Ft./lb.	Nm	Loctite®
1	Head Bolts	19	25	-
2	Valve Caps	75	100	243
3	Inlet Cap	75	100	243
4	Outlet Cap	60	80	243
5	Bearing Flange Bolts	19	25	-
6	Rear Cover Bolts	19	25	-
7	Connecting Rod Bolts	9	11	243
8	Plunger Bolts	11	15	270
9	Valve Cover Bolts	-	-	-
10	Oil Drain Plug	19	25	-

