



sales@hydrorex.com - eli@hydrorex.com  
Office: 832 277 1182

13340 TELGE RD #401 CYPRESS TEXAS 77429 USA

# ESI-TB Series

## DIGITAL CHART RECORDER

Battery Re-Chargable 6-8 Hours



AMERICAN DIGITAL RECORDER

[www.hydrorex.com](http://www.hydrorex.com)  
[www.pressureshop.com](http://www.pressureshop.com)

The software interface allows for real-time **pressure and temperature** recording using a 12" anti-glare touchscreen tablet. Re-Chargeable Battery



Power ON/OFF

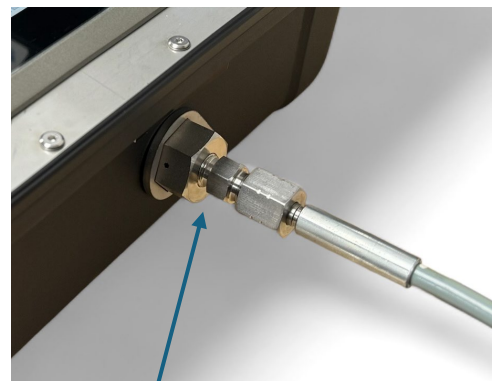
Lightweight yet rugged mobile weatherproof case

Digital test report shareable via USB and wireless

Stainless Steel Control Panel



110V / 220V Female Connection for standard Shop Power



Input pressure connections Female NPT or HP According to pressures

The ESI allows the user to add many input pressures / temperatures and create customized test reports





# Digital Chart Recorder

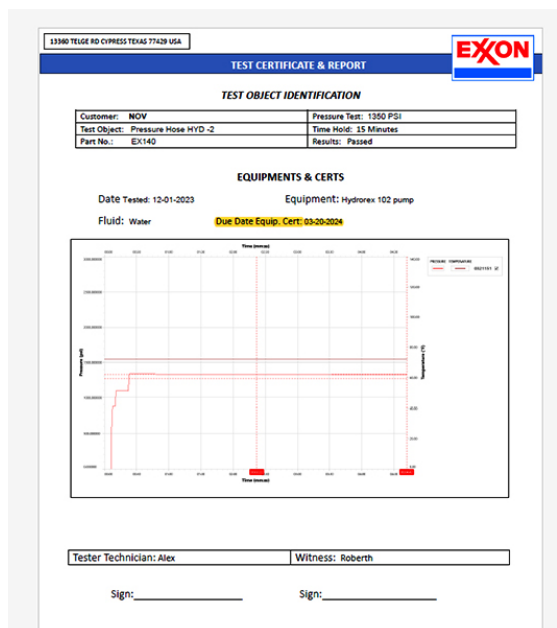
Introducing the world's first Digital Chart Recorder with a 0.15% accuracy in multiple pressure ranges with customizable test reports in a lightweight yet rugged mobile weatherproof case.

Replace outdated mechanical chart recorders with today's technology at an affordable price. No more paper, pens, or batteries!

The esi digital chart recorder offers a rugged design against harsh environments with the ease of a Window's operating system. The esi utilizes a digital pressure transducer and has been designed to measure, analyze and record pressure directly on the mobile tablet without the need for costly I/O interface boards. It allows the user to measure up to 16 pressure & temperature inputs simultaneously and create customized test reports.



Example



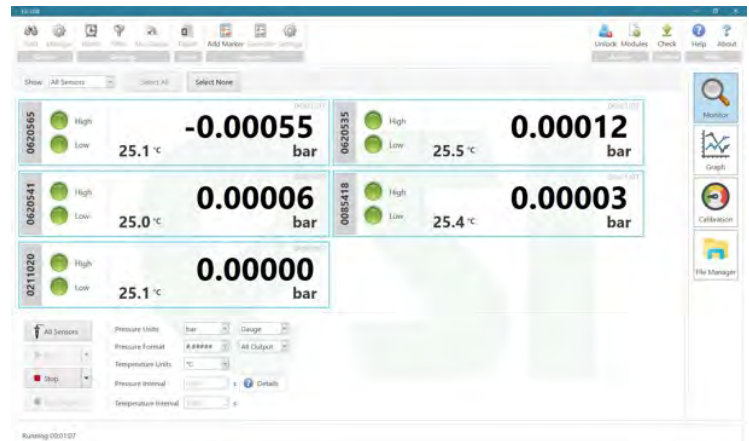
## Features and Benefits

- Records and graphs pressure from vacuum to 70,000 PSI. Multiple Pressure ranges available.
- The esi allows the user to measure up to 16 pressure and temperature inputs simultaneously and create customized test reports.
- Easy setup, configuration and reporting. The software interface allows for real-time pressure and temperature recording using a 12" anti-glare touchscreen tablet.
- Re-Chargeable 8 hours battery life
- Easy Software Interface for Real-Time Pressure & Temperature Monitoring & Reporting
- Digital test report shareable via USB and wireless
- Bulkhead connections available in NPT or High Pressure.
- Light Weight Design (20 lbs.)
- HTS Code 90258090
- 110 V Female Connection for standard Shop Power (220-240V to 110-120V voltage convert device available with over 150 country style plugs)





Monitoring screen graph view



Monitoring screen multiples sensors

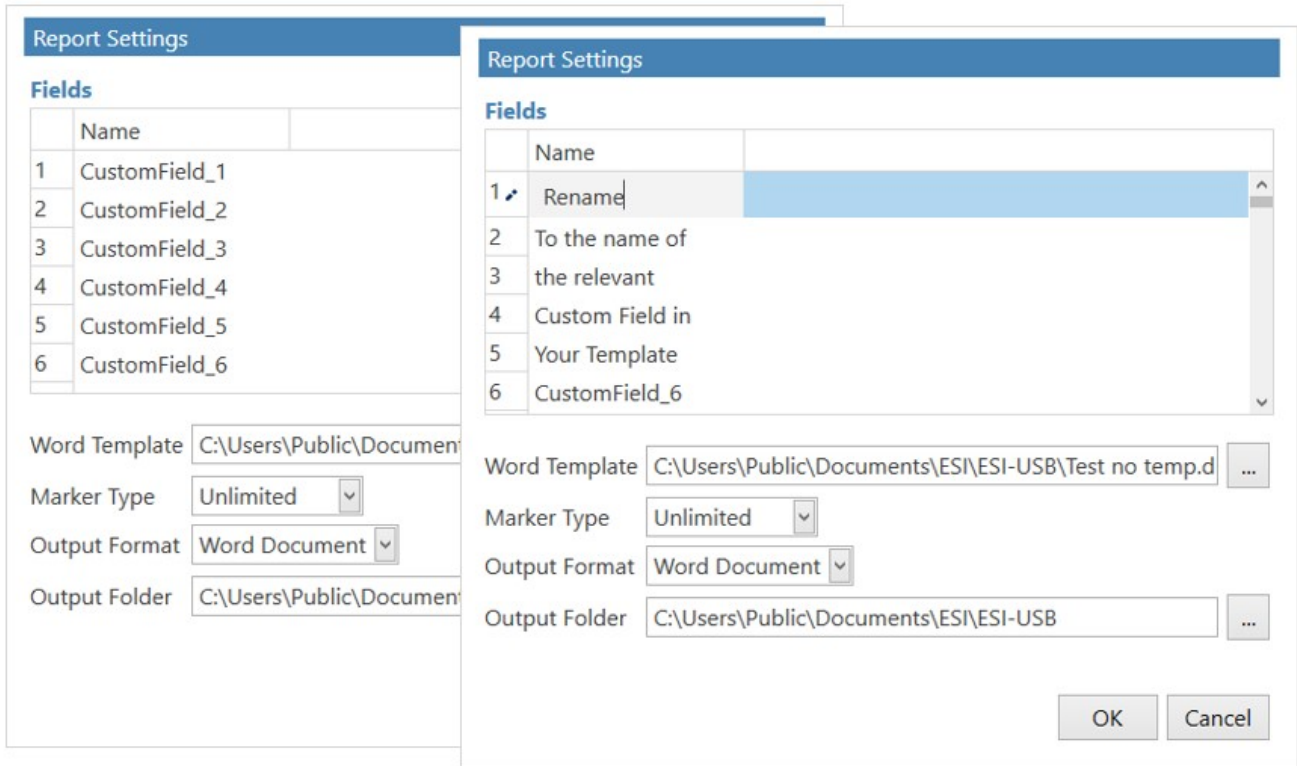
The transducer adjustable sample rate enables dynamic pressures to be measured with up to 21 bit resolution at user selectable speeds up to 1,000 Hz. For real-time analysis, data transferred to the PC is achieved without loss of accuracy or bandwidth. Data can be displayed in graphical or tabular form, with a choice of pressure units and fully adjustable scales. Data can be saved to a file or exported to Excel/PDF. The unique Silicon-on-Sapphire sensor technology provides outstanding performance and gives excellent stability over a wide temperature range. Excellent measurement accuracy provides high resolution with a precision greater than 1 in 10,000.

TYPE	PRESSURES AVAILABLE
Sensor Technology:	Silicone-on-Sapphire
Windows Tablet	12.1" Display with Touchscreen Interface
Standard Pressure Ranges:	<ul style="list-style-type: none"> <li>0 to 500 PSI</li> <li>0 to 1,000 PSI</li> <li>0 to 2,000 PSI</li> <li>0 to 3,000 PSI</li> <li>0 to 10,000 PSI</li> <li>0 to 15,000 PSI</li> <li>0 to 20,000 PSI</li> <li>0 to 30,000 PSI</li> <li>0 to 40,000 PSI</li> <li>0 to 50,000 PSI</li> <li>0 to 60,000 PSI</li> <li>0-70,000 PSI</li> </ul>
Overpressure Safety:	2x up to 6,000 PSI; 1.5x for 15,000 PSI; 1.1x for 21,500 PSI; 1.5x for 30,000 PSI; 1.25x for 60,000 PSI+
Other Pressure Ranges:	PSI, bar, mBar, MPa, Pa, mH <sub>2</sub> O, mmHg, atm, kg/cm <sup>2</sup> , kPa
Accuracy NLHR:	≤ ± 0.15% of span BFSL
Temperature Ranges:	°F or °C
Operating Ambient Temperature:	32°F to +115°F
Storage Temperature:	-4°F to +140°F
Temperature Effects:	±1.5 %FS total error band for -14°F to +176°F. Typical thermal zero and span coefficients ±0.015 %FS/ °C
Pressure Media:	All fluids compatible with Stainless Steel (¼" NPT) or Titanium Alloy (¼" HPF)
Wetted Parts:	¼" NPT – Stainless Steel 316 ¼" HPF – Titanium Alloy
Pressure Connection:	¼" NPT or ¼" High Pressure Female (¼" HPF) / F250C



Each CustomField relates to the custom fields in your template. You can rename these to match the custom fields in your template (On the standard ESI template CustomField\_1 relates to Customer).

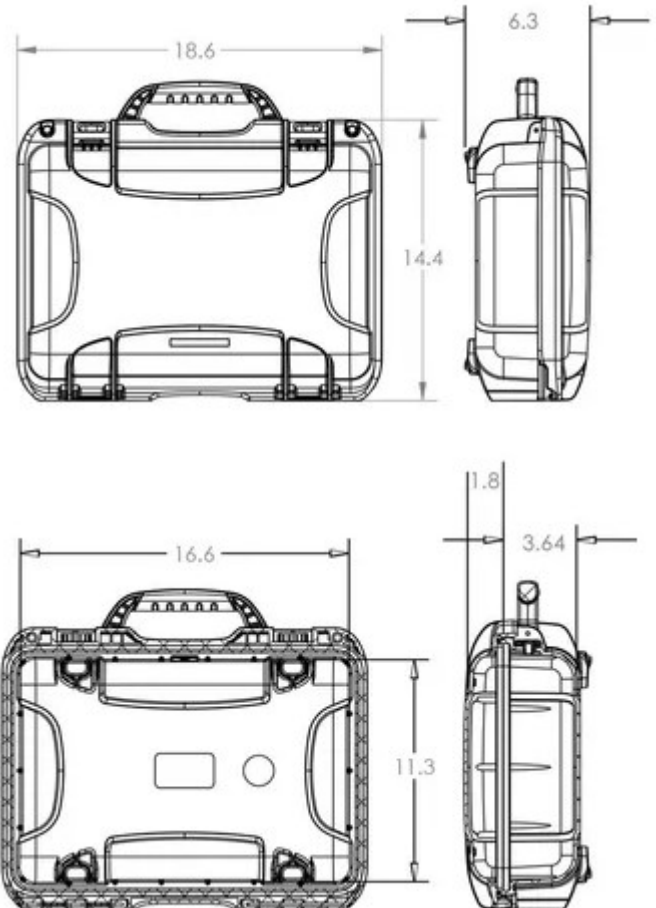
For more information, study the user manual that will be given to you along with the unit or watch the instructional video at [www.hydrorex.com](http://www.hydrorex.com)



### Dimensions

### Suitable for use on all Hydrorex pressure test equipment series

Hydrorex digital chart recorders are the industry standard for accurate, reliable measurement and recording of pressure, differential pressure and temperature in a variety of applications



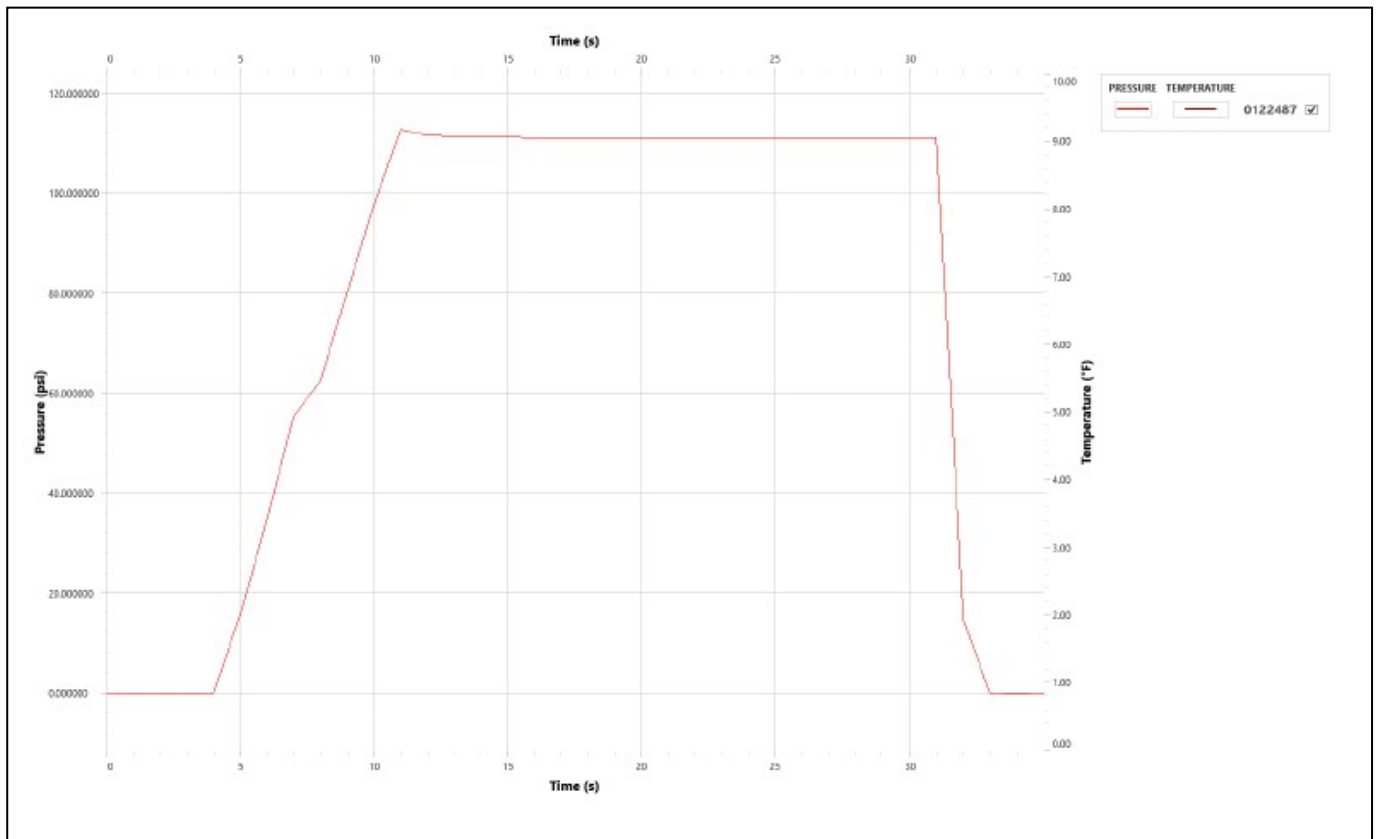
# Test Certificate

## Test Object Identification

Customer:	INSERT_CustomField_1	Time Hold:	INSERT_CustomField_4
Test Object:	INSERT_CustomField_2	Test Pressure:	INSERT_CustomField_5
Test Date:	INSERT_CustomField_3	Part No.:	INSERT_CustomField_6

## Certification Information

Used Cal. Device:	ESI- Digital Recorder	Test Source:	INSERT_CustomField_7
Serial No:	INSERT_Sensor1_Serial	Equip. Cal. Date:	INSERT_CustomField_8



Temperature serves as indication only

Test Technician: INSERT\_CustomField\_9

Signature: \_\_\_\_\_

Test Witness: \_\_\_\_\_

Signature: \_\_\_\_\_

# OVER 150 COUNTRIES ELECTRICAL PLUG

Converter mode convert voltage from 220-240V to 110-120V



Easy to use, all in one adapter and converter combo (UK/US/AU/EU Plug) that fits electrical outlets in most commonly visited countries, over 150 countries.

