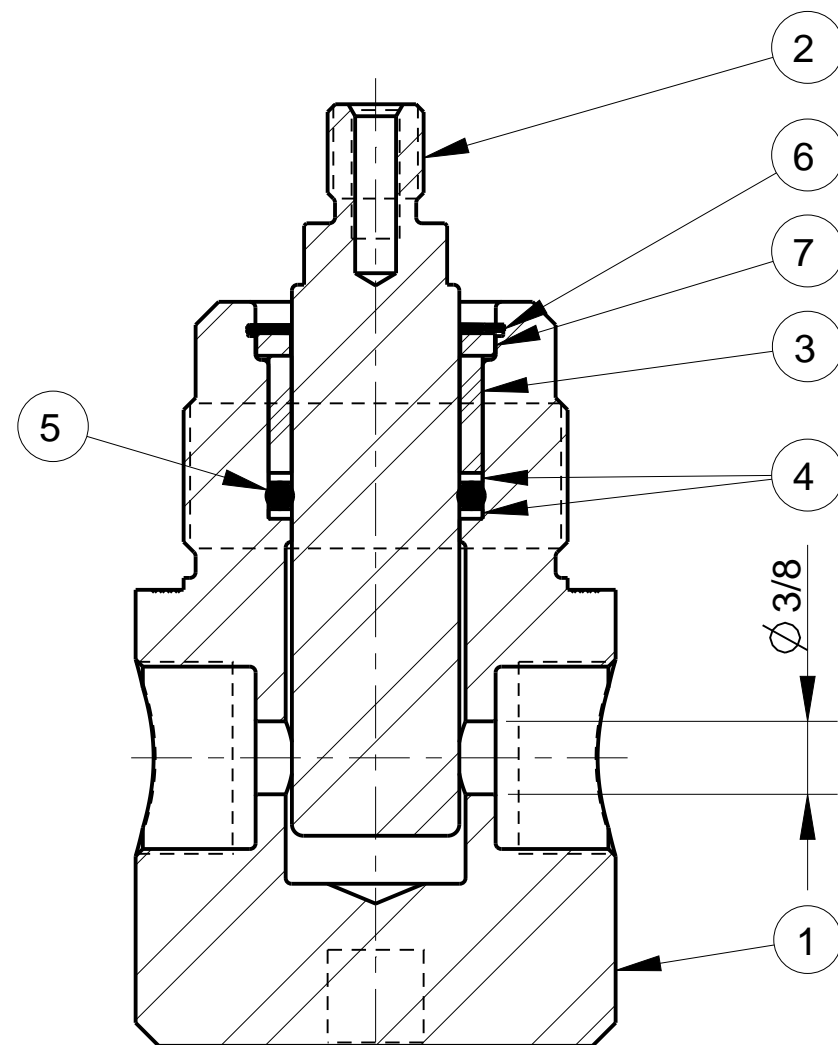
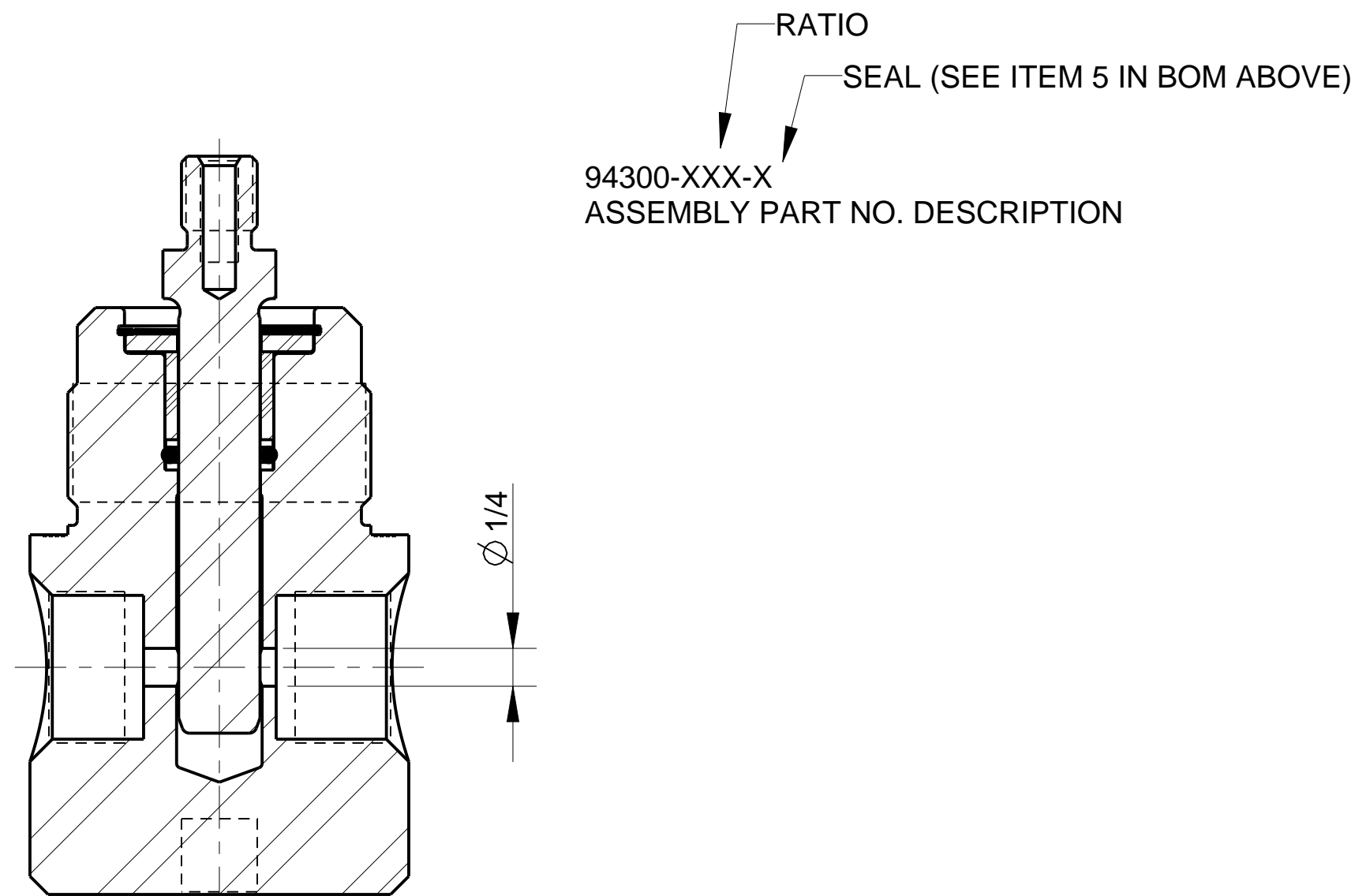


HIP-REX PISTON ASSEMBLY

MODEL			HIP-2K	HIP-3K	HIP-4K	HIP-4.7K	HIP-5K	HIP-7K	HIP-12K	HIP-17K	
RATIO			035:1	060:1	100:1	101:1	125:1	150:1	200:1	300:1	
ITEM	QTY	DESCRIPTION	94300-035	94300-060	94300-100	94300-101	94300-125	94300-150	94300-200	94300-300	
1	1	BODY	94303-035	94303-060	94303-100	94303-101	94299-125	94299-150	94299-200	94299-300	
2	1	PISTON	S-216-10-35	S-216-10-60	S-216-11-100	S-216-11-101	S-216-11-125	S-216-11-150	S-216-11-200	S-216-11-300	
3	1	BUSHING	94157-035	94157-060	94157-100	94157-101	94157-125	94157-150	94157-200	94157-300	
4	2	BACKUP RING	90098-35	90098-60	90098-100	90098-101	90098-125	90098-150	90098-200	90098-300	
5	1	O-RING BASIC P4301 POLYURETHANE	94172-212	94172-116	94172-114		94172-113	94127-112	94172-110	94172-011	
		O-RING -2 NEOPRENE	79550-17-24	79550-14-24	79550-12-24		79550-11-24	79550-10-24	79550-8-24	79550-6-24	
		O-RING -4 EPR	79550-17-28	79550-14-28	79550-12-28		79550-11-28	79550-10-28	91417-110-28	79550-6-28	
6	1	INTERNAL RETAINING RING	94193-125								
7	1	RETAINER	94158-035	94158-060	94158-100		94158-125	94158-150	94158-200	94158-300	



-035 THRU -101 ASSEMBLY
NFC (3/8 NPT) PORTS
SECTION A-A

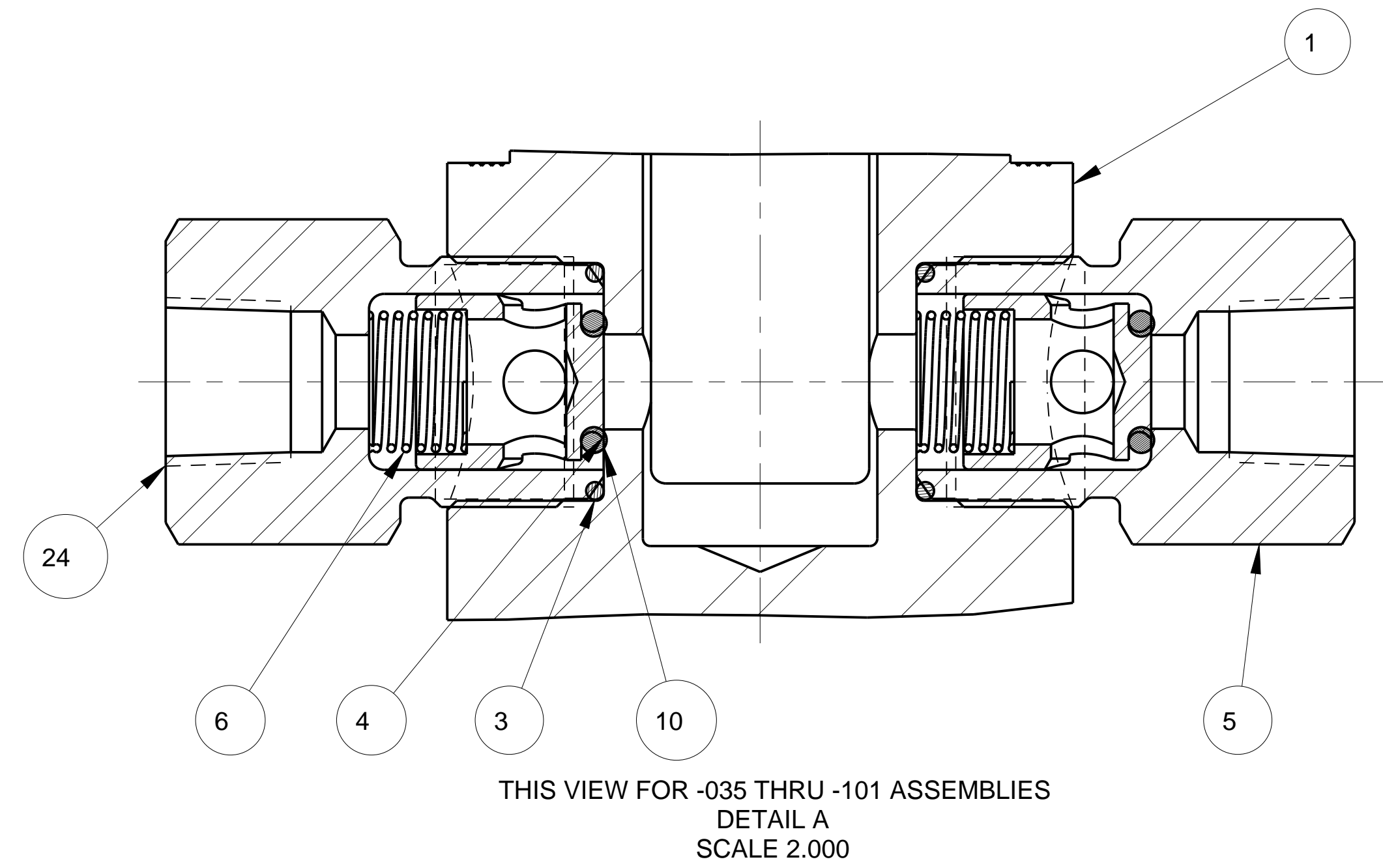
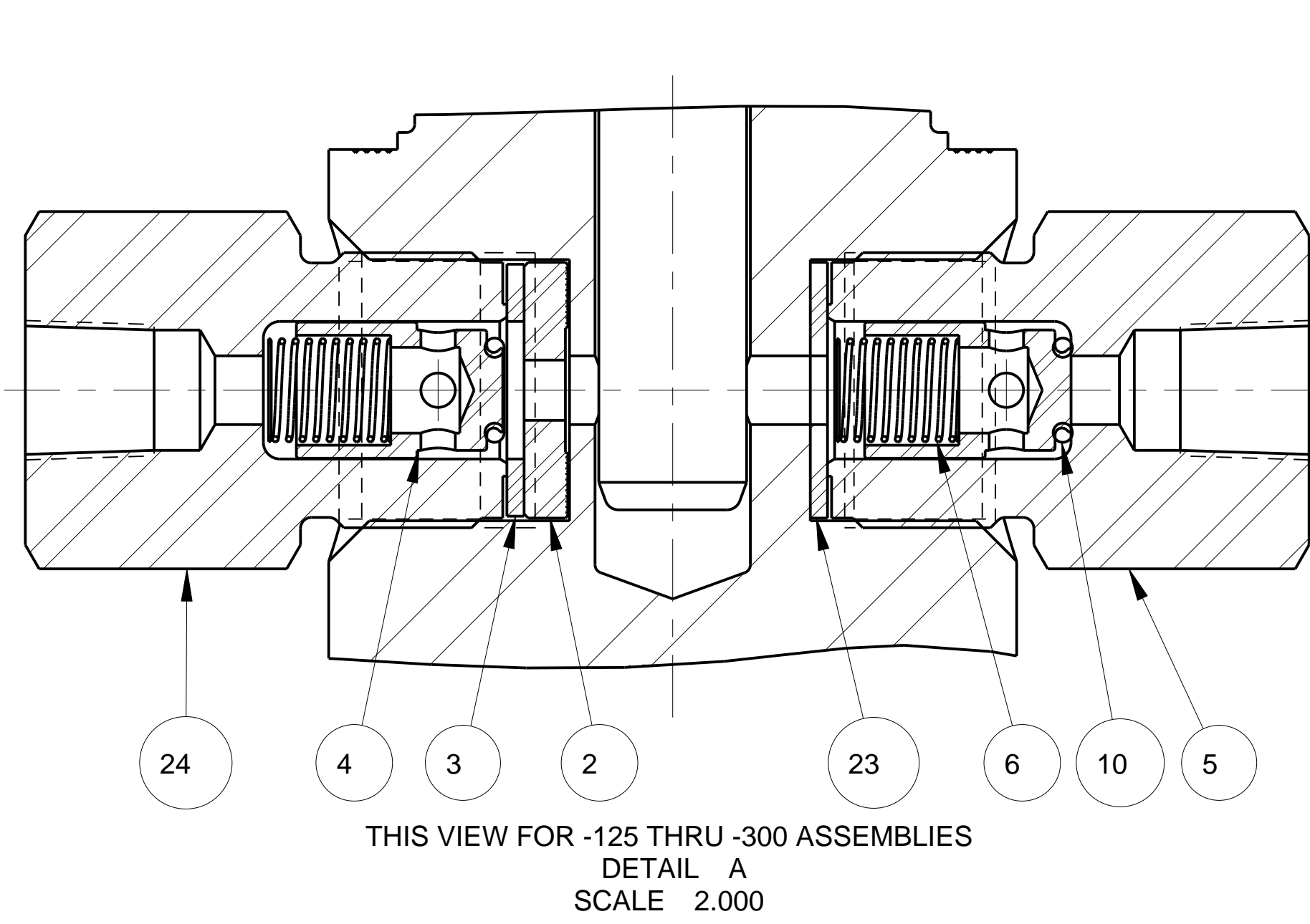
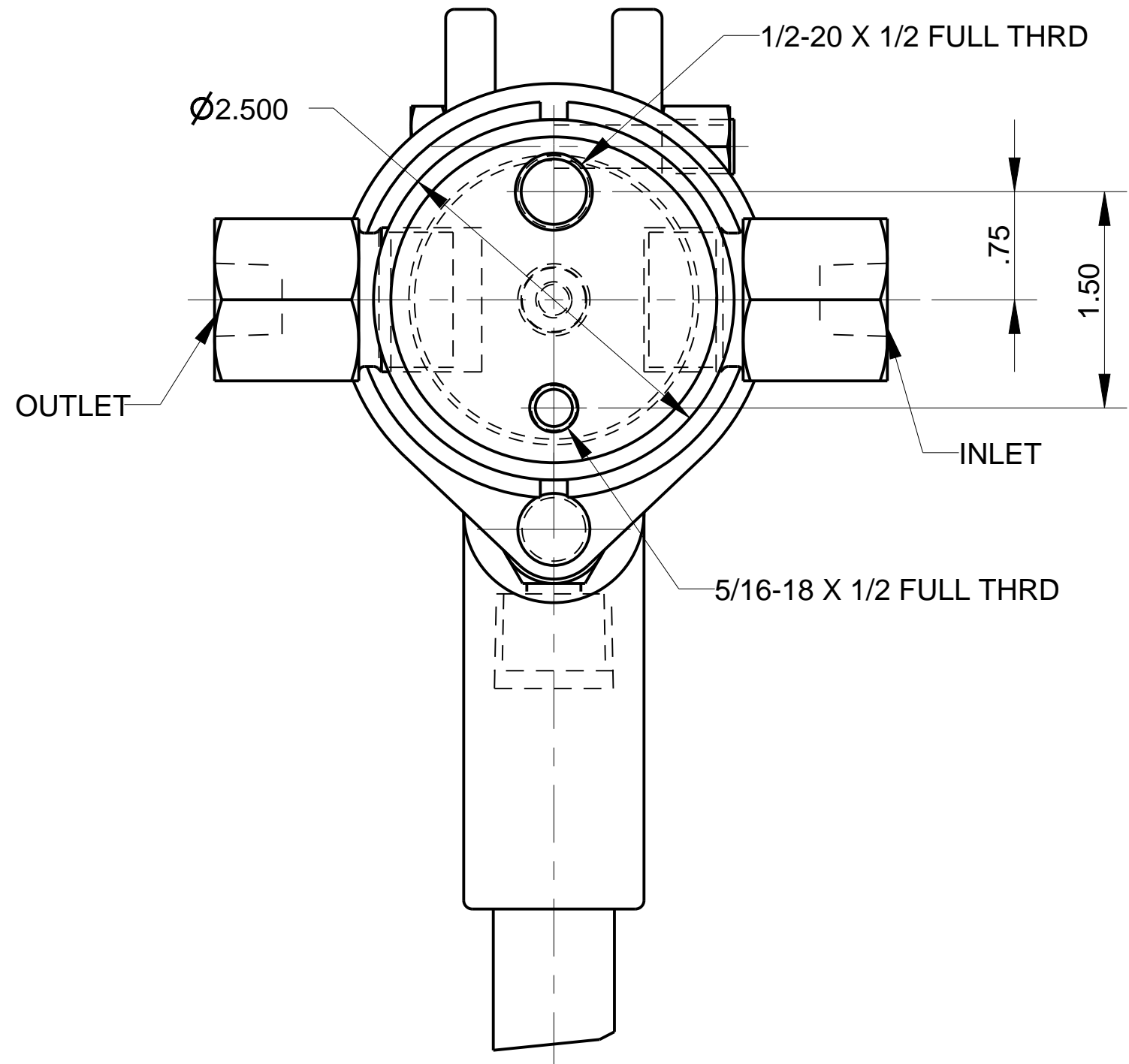
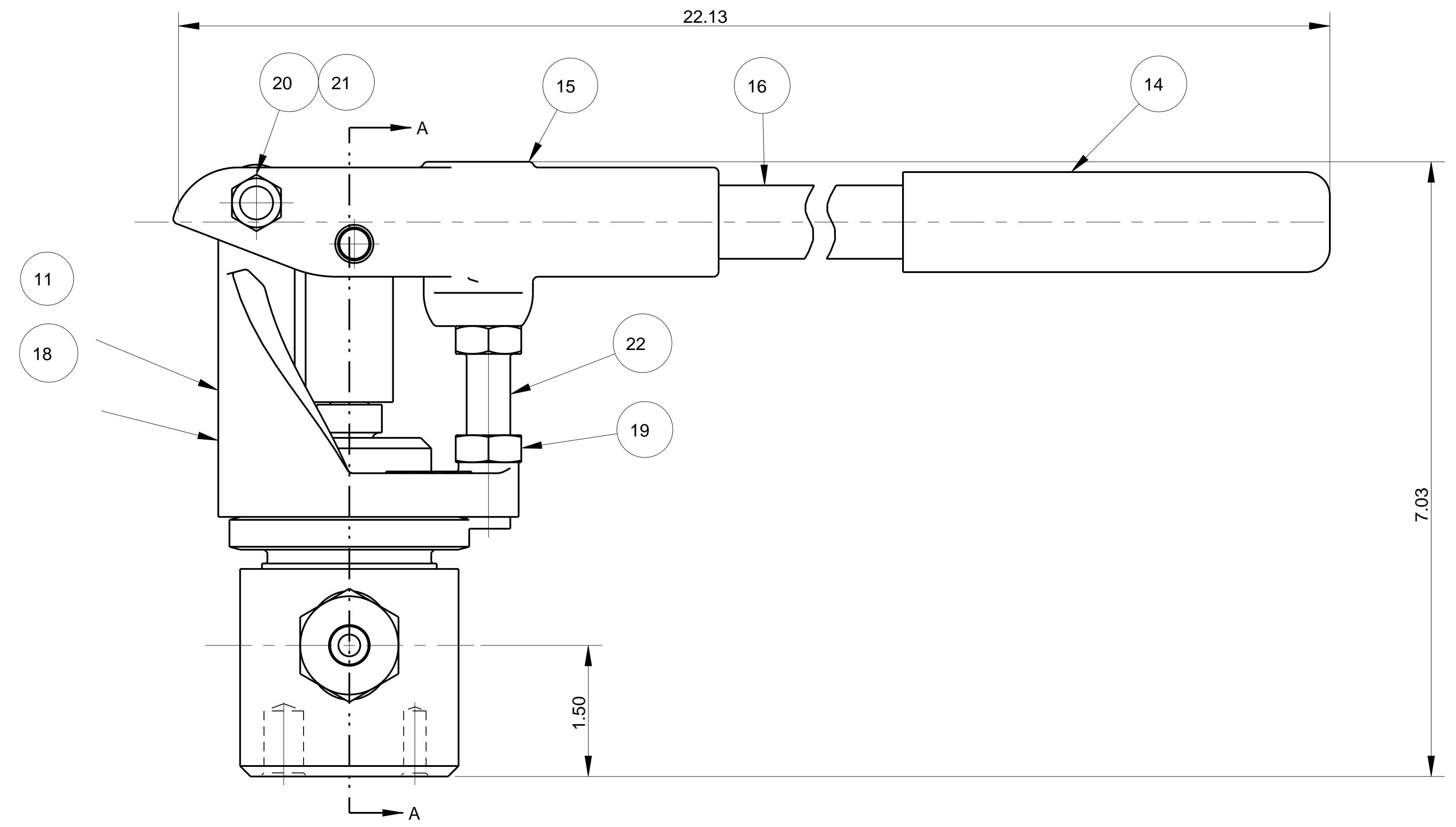
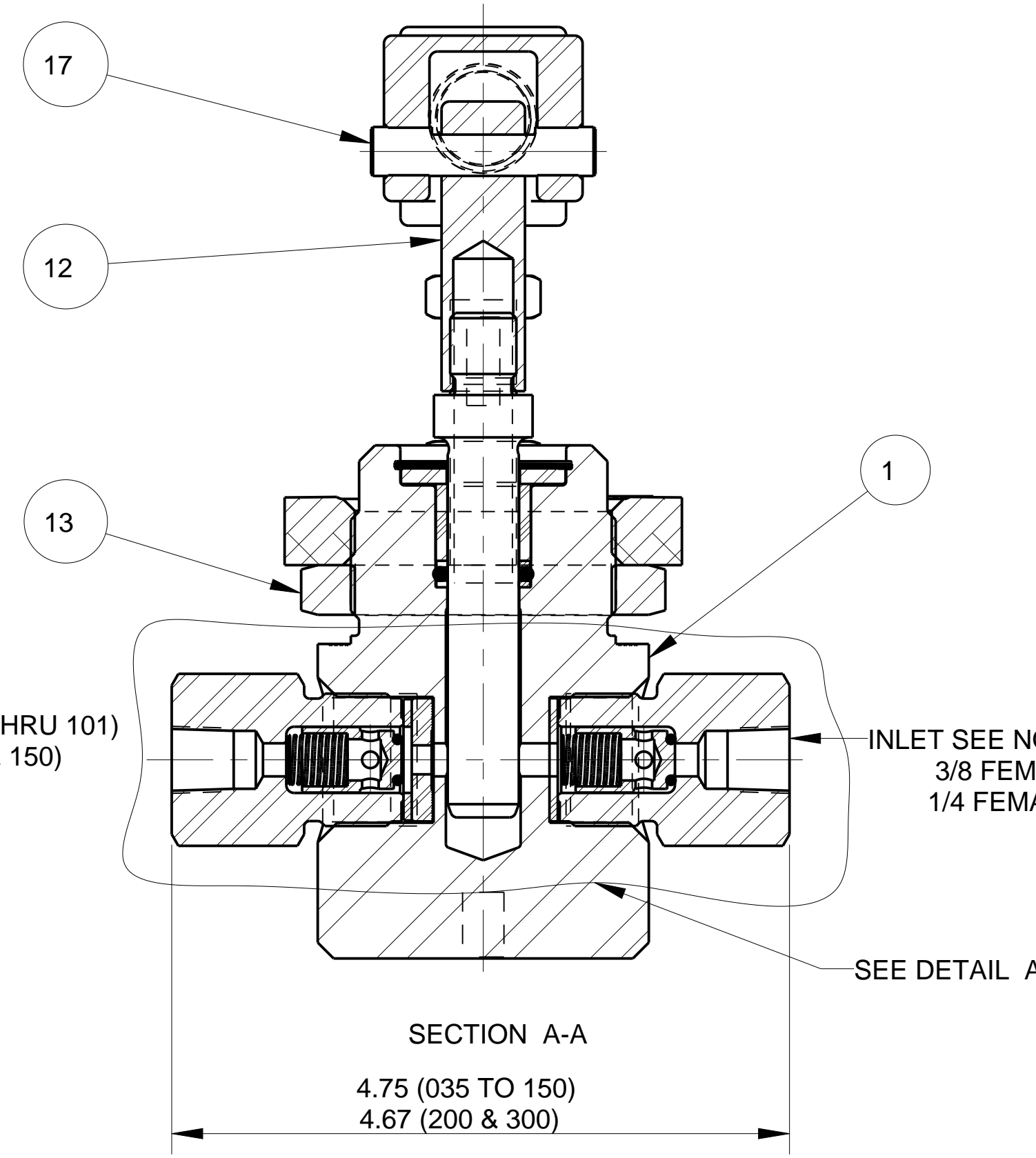


-125 THRU -300 ASSEMBLIES
NFB (1/4 NPT) INLET AND HF4 OUTLET
SECTION A-A

STANDARD TOLERANCES AND MANUFACTURING PRACTICES SPECIFICATION ES-002 APPLIES TO THIS DRAWING.		STANDARD TOLERANCES X.XXX± 0.005 X.XX± 0.01 FRACTIONAL ± 1/64		DISTRIBUTION OR REPRODUCTION OF THIS DOCUMENT IS PROHIBITED WITHOUT WRITTEN PERMISSION FROM HIGH PRESSURE EQUIPMENT A GRACO COMPANY	HIGH PRESSURE EQUIPMENT A GRACO CO. ERIE PENNSYLVANIA USA
D	DCN 19-0058	2019-02-26	JY		TITLE JB HAND PUMP BODY/PISTON ASY 035:1-300:1
REV	REVISION	DATE	BY	SHEET 1 OF 1	94300
				DRAWN BY: TFK	2011-05-05

HIP SERIES - HAND PUMP REPAIR PARTS

- NOTES:
 1. LINEAR DIMENSIONS IN INCHES.
 2. DIMENSIONS ARE FOR REFERENCE ONLY.
 3. CHECK VALVE TORQUES:
 SIZE 035-101 W/3/8 FEMALE NPT (110-120 FT-LBS)
 SIZE 125-300 W/ 1/4 FEMALE NPT AND/OR HF4 (220-240 FT-LBS)

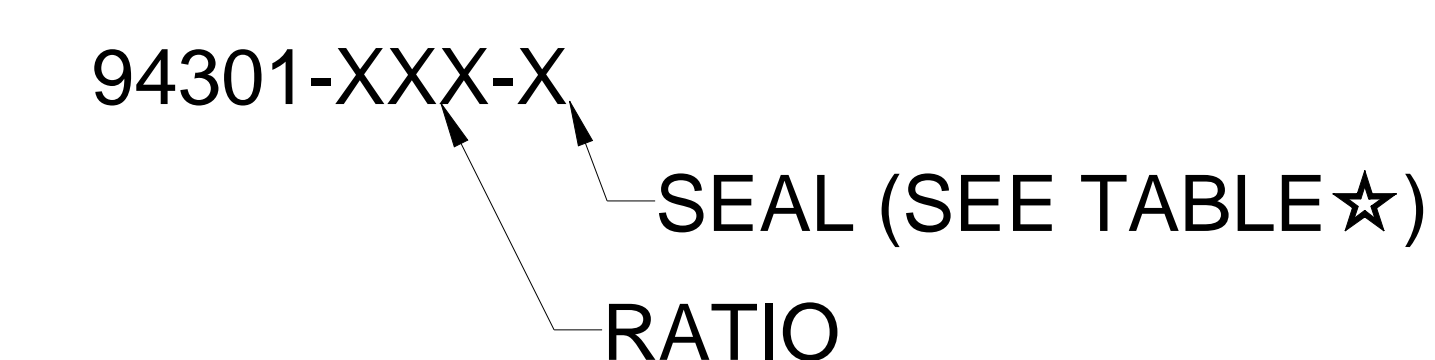


STANDARD TOLERANCES AND MANUFACTURING PRACTICES SPECIFICATION ES-002 APPLIES TO THIS DRAWING		STANDARD TOLERANCES		DISTRIBUTION OR REPRODUCTION OF THIS DOCUMENT IS PROHIBITED WITHOUT WRITTEN PERMISSION FROM HIGH PRESSURE EQUIPMENT A GRACO COMPANY	HIGH PRESSURE EQUIPMENT A GRACO CO. MADE IN USA	
		X.XXX± 0.005			JB HAND PUMP ASSEMBLY 035:1 RATIO	
		X.XX± 0.01			SHEET 1 OF 2	
FRACTIONAL ± 1/64		2020-02-07	JY	DRAWN BY TFK 2011-05-04		94301
G	DCN 20-0045	DATE	BY			
REV	REVISION					

MODEL			HIP-2K	HIP-3K	HIP-4K	HIP-4.7K	HIP-5K	HIP-7K	HIP-12K	HIP-17K
OUTPUT PSI @75 # LOAD			2,220 PSI	3,020 PSI	4,350 PSI	4,750 PSI	5,390 PSI	7,000 PSI	12,000 PSI	17,400 PSI
ASSEMBLY PART NUMBER			94301-035	94301-060	94301-100	94301-101	94301-125	94301-150	94301-200	94301-300
ITEM	QTY	DESCRIPTION	035:1 RATIO	060:1 RATIO	100:1 RATIO	101:1 RATIO	125:1 RATIO	150:1 RATIO	200:1 RATIO	300:1 RATIO
1	1	PISTON/BODY ASSEMBLY ☆	94300-035	94300-060	94300-100	94300-101	94300-125	94300-150	94300-200	94300-300
2	1	SEAT					S-216-27-4			
3	1	GASKET/O-RING ☆	91417-019-1				S-216-28-8			
4	2	POPPET	79420-1				89297			
5	1	BODY, CHECK VALVE INLET	88906-01 (3/8 FEMALE NPT)				89298 (1/4 FEMALE NPT)			
6	2	SPRING	S-216-23				S-216-63			
10	2	O-RING ☆	79550-8-1				79550-5-1			
11	1	HAND PUMP PIVOT POST					S-525-1			
12	1	ADAPTER					S-525-2			
13	1	JAM NUT MANUAL OP HAND PUMP					S-525-3			
14	1	HANDLE GRIP					81530-18			
15	1	HAND PUMP BEAM					B-113-060-1			
16	1	HANDLE					88094			
17	1	PIN					P75.57			
18	1	NAMEPLATE					80063-2			
19	1	NUT, PLAIN FLAT HEX JAM					93776-1			
20	1	NUT, SELF LOCKING,3/8-16					MS51922-17			
21	1	SCREW 3/8-16 X 2.0 HEX HD					92124-08B16Z			
22	1	SCREW 1/2-20 X 2.0 HEX HD					MS90726-115			
23	1	GASKET/O-RING ☆	91417-019-1				S-216-28-10			
24	1	BODY, CHECK VALVE OUTLET	88906-02 (3/8 FEMALE NPT)				89298-02 (1/4 FEM NPT)		89298-1 (HF4)	

SEAL TABLE ☆					
-(#)		-2	-3	-4	-5
SEAL MATL	NITRILE	NEOPRENE	VITON	EPR	P4301 POLYURETHANE
ITEM 1	AS SHOWN	94300-(XXX)-2	94300-(XXX)	94300-(XXX)-4	94300-(XXX)
ITEM 3 & 23 -035 THRU -101 ONLY		91417-019-11	91417-019-18	91417-019-28	94172-019
ITEM 10 -125 THRU -300		79550-5-11	79550-5-18	79550-5-28	94172-010
ITEM 10 -035 THRU -101		79550-8-11	79550-8-18	91417-110-28	94172-110

ASSY. PART NO. DESCRIPTION



STANDARD TOLERANCES AND MANUFACTURING PRACTICES SPECIFICATION ES-002 APPLIES TO THIS DRAWING		STANDARD TOLERANCES X.XXX± 0.005 X.XX± 0.01 FRACTIONAL ± 1/64		DISTRIBUTION OR REPRODUCTION OF THIS DOCUMENT IS PROHIBITED WITHOUT WRITTEN PERMISSION FROM HIGH PRESSURE EQUIPMENT A GRACO COMPANY	HIGH PRESSURE EQUIPMENT A GRACO CO ERIE PENNSYLVANIA USA JB HAND PUMP ASSEMBLY
G	DCN 20-0045	2020-02-07	JY		
REV	REVISION	DATE	BY	SHEET 2 OF 2	
				DRAWN BY TFK	2011-05-04
				94301	