



Designers and Manufacturers of Hydraulic and Pneumatic Equipment

SC HYDRAULIC ENGINEERING CORPORATION

And Hydrostatic Systems Manufacturing by Hydrorex LLC in Texas

Location: 13360 Telge Rd Ste 606 Cypress TX 77429 USA

12REX SERIES AIR OPERATED DOUBLE-ACTING UNIT



**P
U
M
P
S**

HYDROREX

12REX SERIES



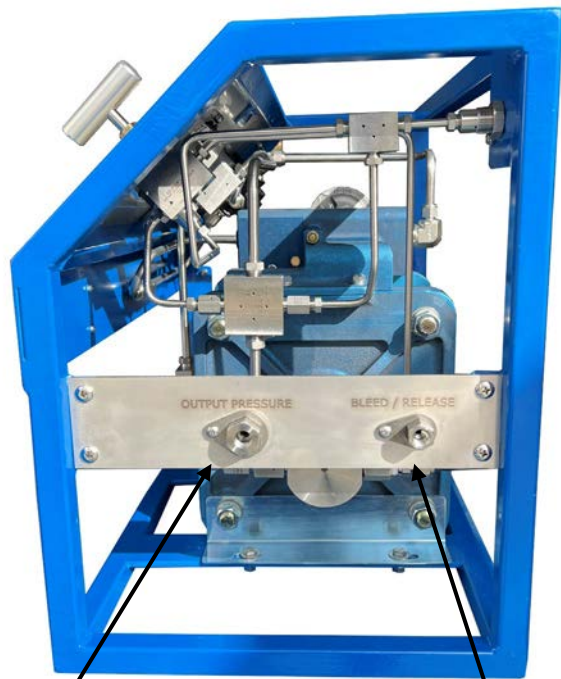
Additional Pressure Port on Top
Could be used for: Chart Recorder, Sensor,
Extra Output, or Extra Pressure Gauge
NEED TO BE REQUESTED



Liquid Port

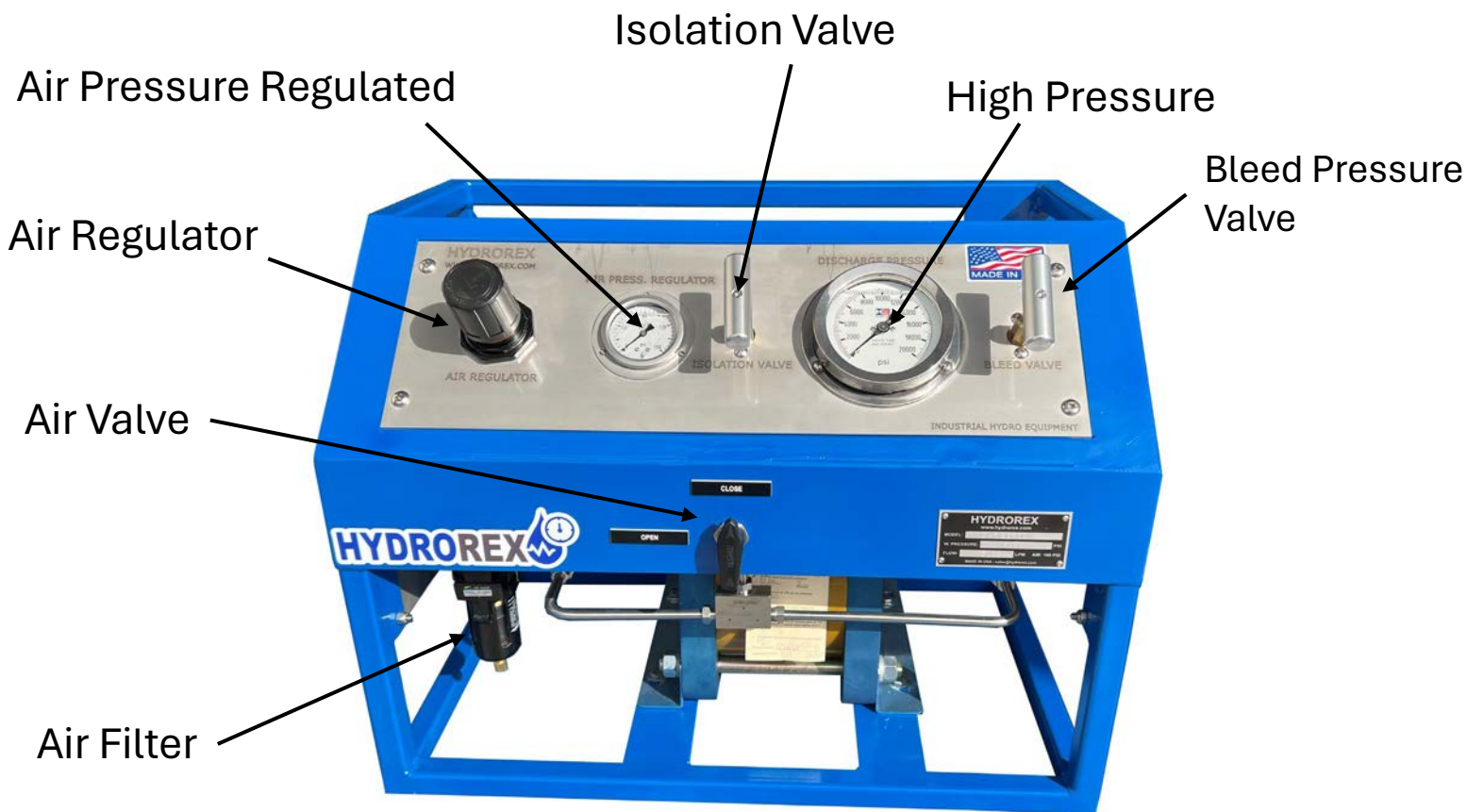
Air Inlet

Air Shop Pressure



Output Pressure

Bleed Pressure



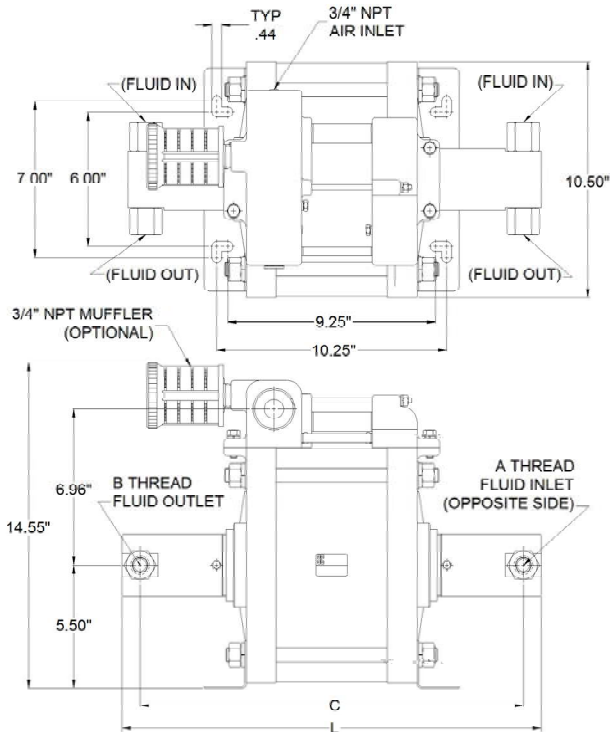
12 SERIES

Double Acting Liquid Pump

APPLICATIONS

- Hydrostatic Test
- Burst Pressure & Test
- Wire-line control systems
- Blow-out preventer control systems
- Bop and Sub-sea High Pressure
- Pressure testing
- Sub-surface control systems
- Oil & Gas Pressure Injection

Liquids: Water, Hydraulics, Oils, Glycol and More....



Mounting Dimensions in Inches

MODEL	Pistons Area Ratio	Max. Outlet Pressure @ 100-psig Air Supply (PSI)	Displacement Per Cycle (Cu. In.)	Connection Ports		Low Pressure FLOW	High Pressure FLOW
				Inlet	Outlet		
12-308REX	33	3000	16.84	1/2"	1/2" NPT	16	8
12-606REX	64	6000	8.59	1/2"	1/2" NPT	12	6
12-114REX	114	11000	4.83	1/2"	1/4" NPT	8	4
12-183REX	178	18000	3.09	1/2"	3/8 FMP*	6	3
12-252REX	256	25000	2.15	1/2"	3/8 FHP**	4	2

*Coned and Threaded Medium Pressure Connection for 20 KSI 9/16" O.D. Tubing.

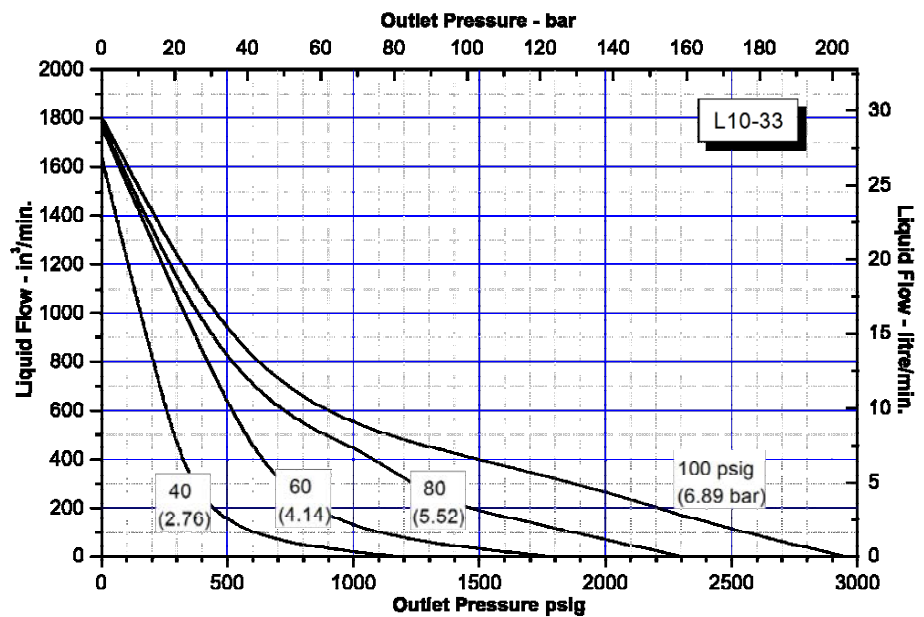
**Coned and Threaded High Pressure Connection for 25K" 3/8 HP O.D. Tubing.



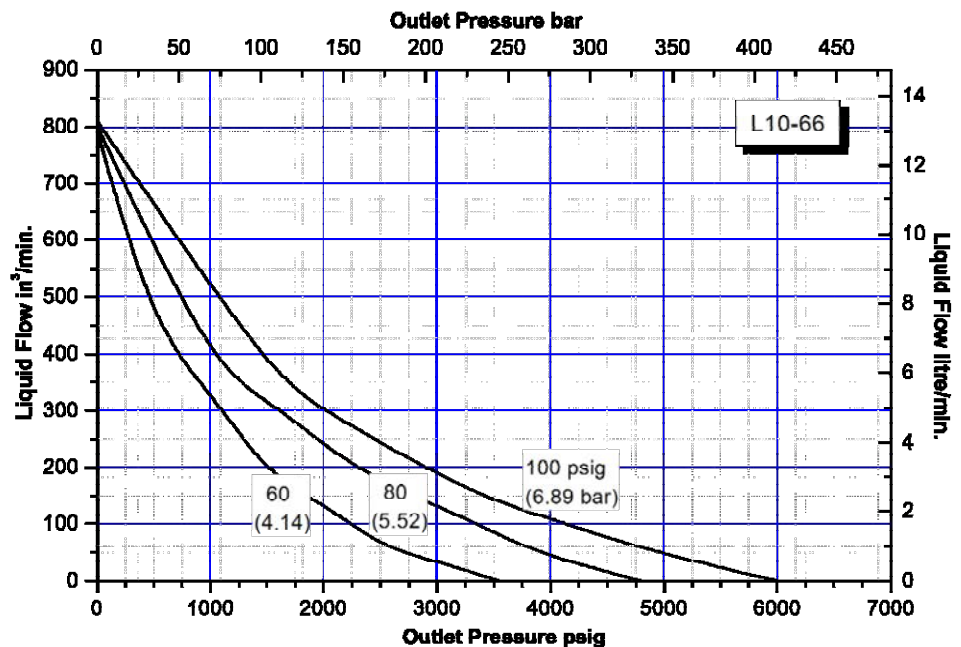
12REX SERIES

- Hydrostatic pressure test pump system, air operated (pneumatic driven) double acting liquid pump.
- It specializes in all Industrial hydro pressure testing including: Piping, Hoses, Vessels, Spools, Valves, Plumbing, Instrumentation Test, Subsea BOP, and many more applications.
- The 12REX Series pump has a 10" diameter air cylinder with stainless steel wetted parts.
- This double acting pump is available in five pressure ratios and capable of hydraulic pressures up to 25,500-psi
- When operating from 0 to rated hydraulic pressure, air consumption will be approximately **72 SCFM** of free air at 100 psi output. At lower air pressures and higher hydraulic pressures air consumption will be reduced proportionately to flow rates indicated.
- The 10-REX Series "Dry Lube" pump it is pre-lubricated and therefore does not require an air line lubricator.
- For use on a wide range of fluids including water, oils/hydraulics, glycol and many other solubles made in USA with highest quality components for low operational cost, used in all industries including Oil & Gas.

12-308REX

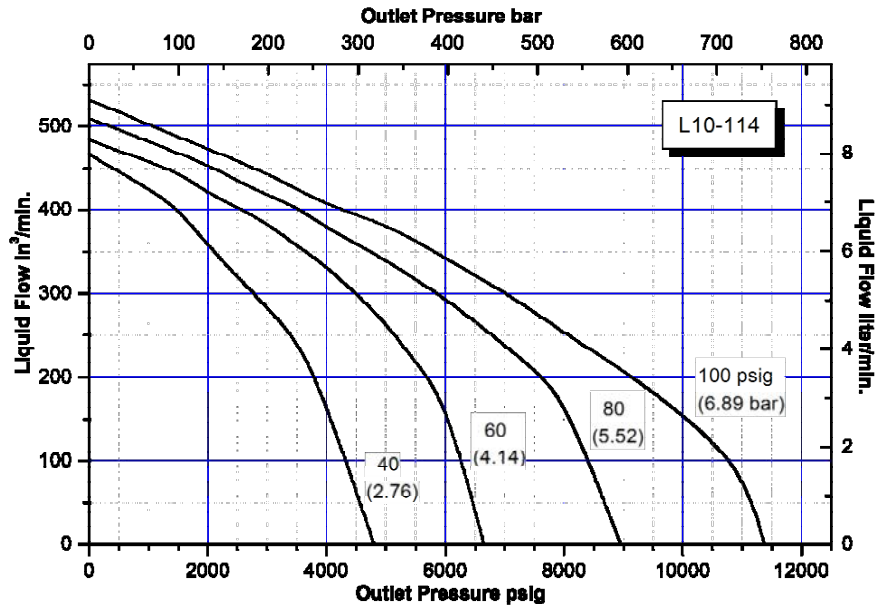


12-606REX

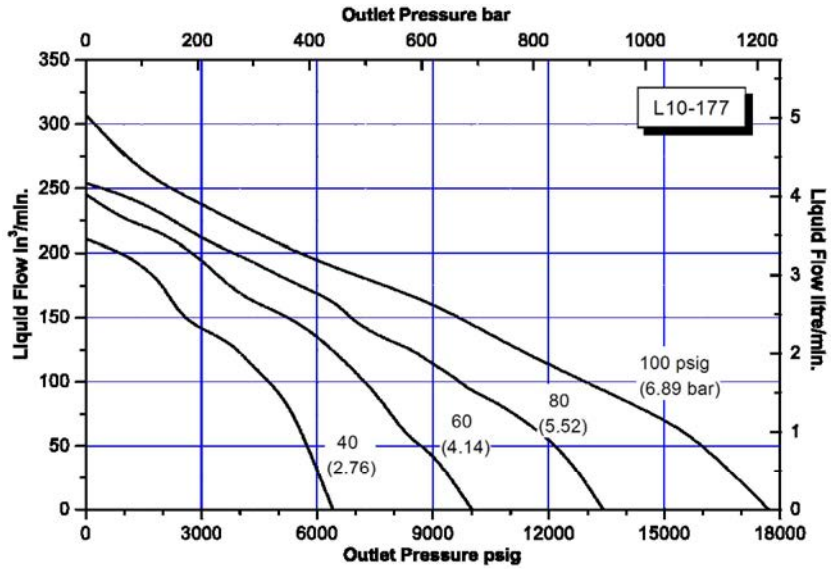


12REX SERIES

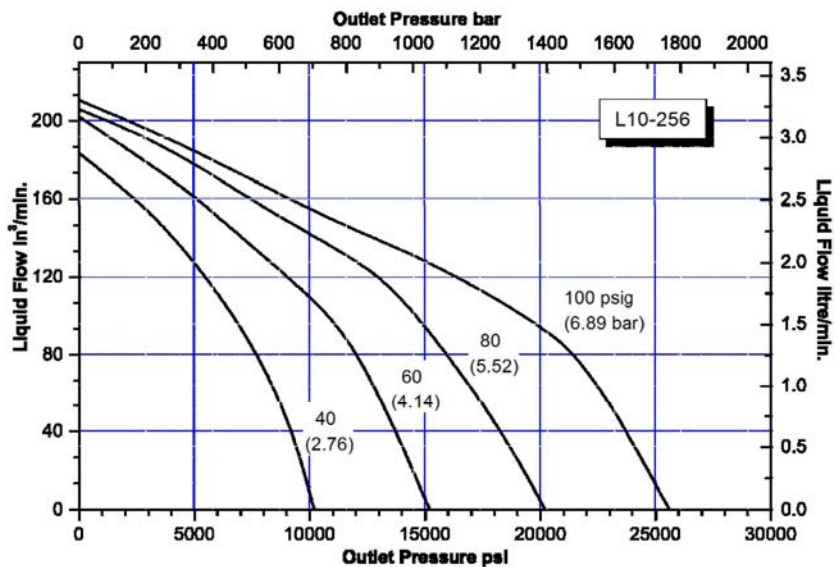
12-114REX



12-183REX



12-252REX



LIMITED WARRANTY

SC manufactured products are warranted free of original defects in material and workmanship for a period of one year from date of purchase to first user. This warranty does not include packing, seals or failures caused by lack of proper maintenance, incompatible fluids, foreign materials in the air media, in the fluid media or application of pressures beyond catalog ratings. Products believed to be originally defective may be returned, freight prepaid, for repair and/or replacement to the distributor, authorized service representative or to the factory. If upon inspection by the factory or authorized service representative and the problem is found to be originally defective material or workmanship, repair or replacement will be made at no charge for labor and materials, F.O.B. the point of repair or replacement. Permission to return under warranty should be requested prior to shipment. A Return Material Authorization Number (RMA), the original purchase date, purchase order number, serial number, model number, reason for return or other pertinent data to establish warranty claim must be included in the documentation to expedite the return or replacement to the owner.

If the unit has been disassembled, misused, or altered without prior **written** authorization, warranty is void. If it has been improperly reassembled or substitute parts have been used in place of factory manufactured parts, warranty is void.

Any modification to any SC product which you have made or may make in the future will void warranty. SC disclaims any and all liability obligation, or responsibility for the modified product, and for any claims, demands or causes of action for damage or for personal injuries resulting from the modification and/or use of such a modified SC product.

SC's obligation with respect to its products shall be limited to replacement, and in no event shall SC be liable for any loss or damage, consequential or special, of whatever kind or nature, or any other expense which may arise in connection with or as a result of such products or the use or incorporation thereof in a job. This warranty is expressly made in lieu of all other warranties of merchantability and fitness for a particular purpose. No express warranty and no implied warranties whether of merchantability or fitness for a particular purpose or otherwise, other than those expressly set forth above, shall apply to SC products.