

TECHNICAL DATA SHEET

PRODUCT	Tank Diaphragm Pump
MODEL	TD12-60REX
SERIES	SERIE TD



Designed for multiple purposes, such as quick filling, transferring liquids from one point to another, flushing fluids, hydrostatic pressure test 10-100 Psi and more. Powerful air-operated pump operates at up to 100 PSI and is capable of pumping up to 12 gallons/min at temperatures up to 200°F. Made in USA with highest quality components for low operational cost. Available for use on a wide range of fluids including water, glycol, oil/ hydraulic and other solubles.

FEATURES/BENEFITS

- Designed for easy maintenance
- Air operated liquid pump
- Stainless steel liquid tank 24" x 24" x 24"
- 60 Gallons capacity
- All stainless tubing, fittings and valves.
- Unit dimensions: 24" x 24" x 40"

SPECIFICATIONS

Output Flow	12 Gpm
Max Output Pressure	100 Psi
Air Operates from	40 -110 Psi
Inlet	1/2" female NPT
Outlet	1/2" female NPT
Tank	60 Gallons
Pump	Roughneck

GENERAL PRODUCT INFORMATION

- When operating from 0 to rated hydraulic pressure, air consumption will be approximately 24-56 scfm of free air at 100 psi output. At lower air pressures and higher hydraulic pressures air consumption will be reduced proportionately to flow rates indicated.
- Not for use with chemical or gasoline.
- Diaphragm pump is a Nitrile elastomer inside and cast aluminum housing not only provides great strength, but it's also rust-resistant for durability and long-lasting performance.
- Maintenance parts for future repairs, all components and accessories can be found on our website www.hydrorex.com

DT SERIES Models with additional speedy fill-up pump that will help to suction liquids quickly from any container, reservoir, tank or any other section thus filling the surface up to 100 psi, (available in flow 12 GPM).



AIR-OPERATED DOUBLE DIAPHRAGM PUMP



INTRODUCTION

The diaphragm pump offers high volume delivery even at low air pressure.

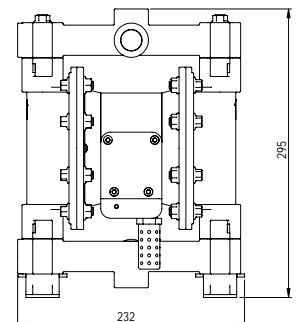
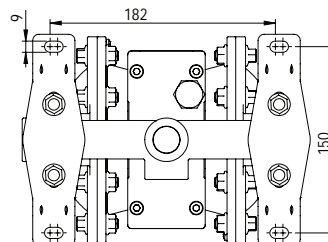
Air-operated double diaphragm pumps utilize a pressure differential in the air chambers to alternately create suction and positive fluid pressure in the fluid chambers, ball check insure a positive flow of fluid. Pump cycling will begin as air pressure is applied and it will continue to pump and keep up with the demand. It will build and maintain line pressure and will stop cycling once maximum line pressure is reached (dispensing device closed) and will resume pumping as needed.

TECHNICAL INFORMATION

Model	41763	
Inlet/Outlet	1/2"	
Air Inlet	1/4"	
Flow Rate	12GPM	
Max. Air Inlet Pressure	115PSI	
Max. Outlet Pressure	115PSI	
Max. Diameter Solid	1/8"	
Membrane	Nitrile	

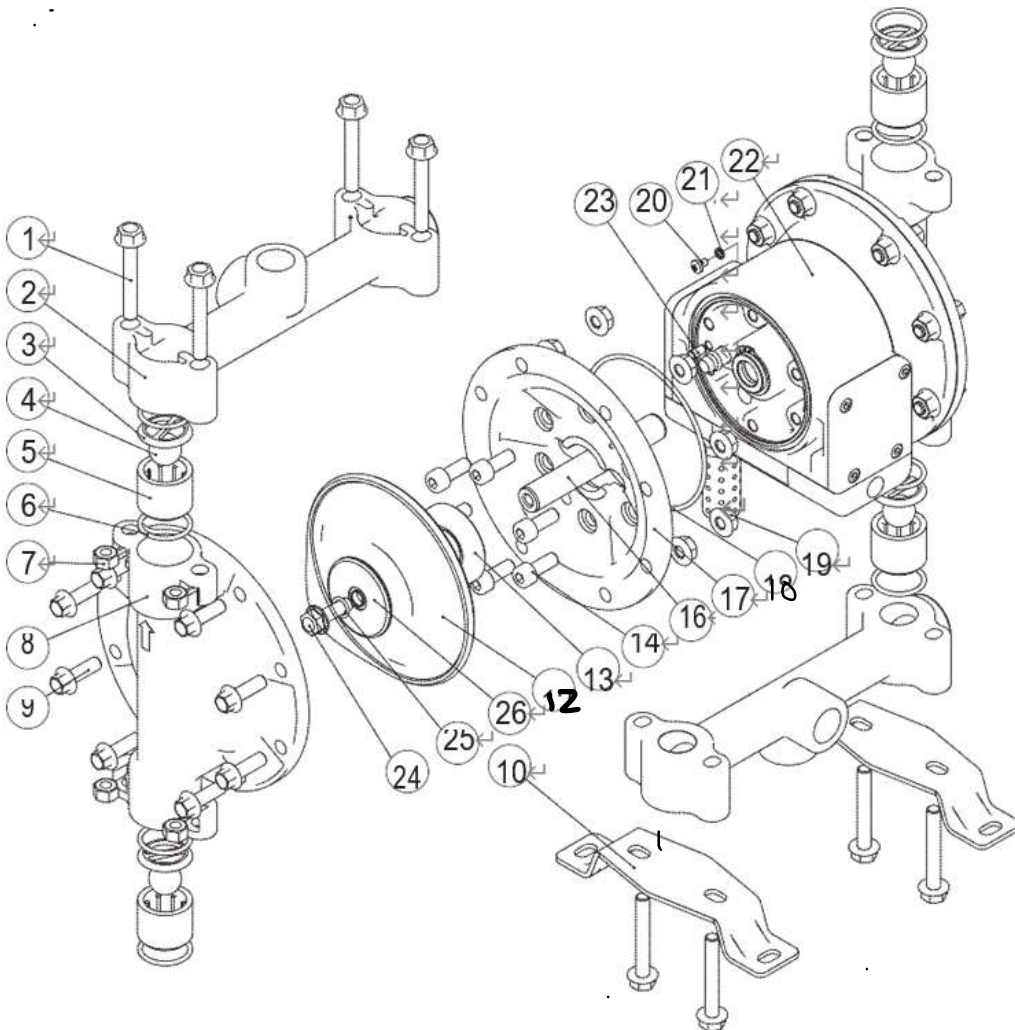
DIMENSIONAL DATA (UNIT: MM)

MODEL: 41763



DIAGRAMS AND PARTS LIST

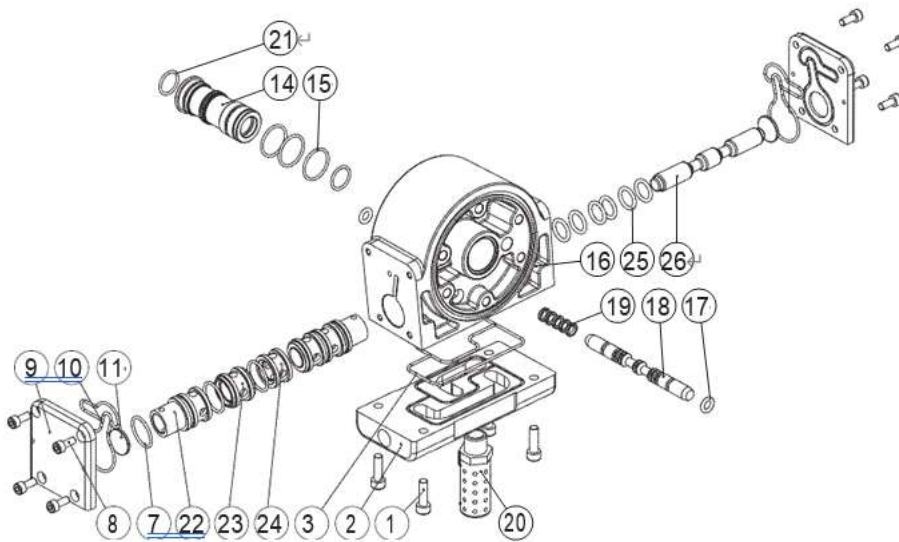
1 FLUID SECTION FOR MODEL: 41763



Part	Description	Q'ty	Part	Description	Q'ty
1	Hex-bolt M8x55	8	14	Screw M8X16	12
2	Discharge Manifold	2	16	Connecting Shaft	1
*3	Valve cover	4	17	Air Chamber	2
*4	Valve Ball	4	*18	O-ring 94.92X2.62	2
*5	Valve Seat	4	19	Hex-bolt M8	16
*6	O-ring 28.24x2.62	8	20	Screw M5X8	1
7	Nut M8	8	21	Washer	1
8	Liquid Chamber	2	22	Air Motor Assembly	1
9	Hex-bolt M8X25	16	23	Straight pin	2
10	Bracket	2	24	Hex-bolt M8x25	2
*12	Diaphragm	2	25	O-ring (9.75x1.78)	2
13	Air Chamber Plate	2	26	Liquid Chamber Plate	2

Note: The Part No. with "*" are the wearing parts.

2 AIR MOTOR SECTION



Part	Description	Q'ty	Part	Description	Q'ty
1	Hex-bolt M6X20	4	*17	O-ring 7.1X2.65	2
2	Press board	1	18	Pilot Valve	1
3	Seal for press board	1	*19	O-ring 6.86X1.78	5
*7	O-ring 13.94x2.62	6	20	Muffler 3/8"	1
8	Hex bolt M5X12	8	*21	O-ring 15.60X1.78	2
9	Gasket	2	22	Spacer	2
*10	Seal for gasket	2	23	Spacer	2
*11	Washer	2	24	Spacer	1
14	Sleeve	1	25	O-ring 13.94X2.62	6
*15	O-ring 20.35X1.78	3	26	Major Valve	1
16	Retaining Ring 25	1			

Note: The Part No. with "*" are the wearing parts.

For replacement parts and technical questions, please call **1-800-222-5381**.



Distributed by
 Northern Tool + Equipment Co., Inc.
 Burnsville, MN 55306
 NorthernTool.com